

Index

A

Accident and Sickness Insurance Minimum Standards (B) Subgroup	30
Accounting Practices and Procedures (E) Task Force	66
Actuarial Opinion (C) Working Group	42
Actuarial Value (B) Subgroup	24
Advisory Organization Examination Oversight (C) Working Group	34
Analyst Team System Oversight (E) Working Group	75
Annuity Disclosure (A) Working Group	15
Annuity Suitability (A) Working Group	15
Antifraud (D) Task Force	53
Antifraud Education Enhancement (D) Working Group	54
Antifraud Technology (D) Working Group	54
Audit Committee	13
Auto Insurance (C/D) Working Group	35

B

Big Data (EX) Working Group	9
Biographical Third-Party Review (E) Subgroup	63
Blanks (E) Working Group	67

C

C-3 Phase II/AG 43(E/A) Subgroup	71
Cancer Claims Cost Table (B) Subgroup	24
Capital Adequacy (E) Task Force	69
Casualty Actuarial and Statistical (C) Task Force	41
Catastrophe Insurance (C) Working Group	36
Catastrophe Risk (E) Subgroup	73
Climate Change and Global Warming (C) Working Group	36
ComFrame Development and Analysis (G) Working Group	86
Committee Structure	4
Company Licensing Transactions (E) Subgroup	63
CO-OP Solvency and Receivership (B) Subgroup	21
Creditor-Placed Insurance Model Act Review (C) Working Group	37
Crop Insurance (C) Working Group	37
Cybersecurity (EX) Working Group	10

E

Electronic Workpaper (E) Working Group	75
ERISA (B) Working Group	29
Examination Oversight (E) Task Force	74
Executive (EX) Committee	5
Experience Reporting (A) Subgroup	19

F

Financial Analysis (E) Working Group	60
Financial Analysis Handbook (E) Working Group	76
Financial Analysis Research and Development (E) Working Group	76
Financial Condition (E) Committee	59
Financial Examiners Coordination (E) Working Group	77
Financial Examiners Handbook (E) Technical Group	77
Financial Regulation Standards and Accreditation (F) Committee	85

Financial Stability (EX) Task Force	6, 10
---	-------

G

Government Relations (EX) Leadership Council	7
Group Capital Calculation (E) Working Group	60
Group Solvency Issues (E) Working Group	61

H

Health Actuarial (B) Task Force	23
Health Care Reform Actuarial (B) Working Group	24
Health Care Reform Regulatory Alternatives (B) Working Group	22
Health Insurance and Managed Care (B) Committee	21
Health Reform Solvency Impact (E) Subgroup	62
Health Reserves (B) Subgroup	25
Health Risk-Based Capital (E) Working Group	69

I

Independent Adjuster Licensing (D) Working Group	57
Individual Disability Valuation Table Implementation (B) Subgroup	25
Information Systems (EX1) Task Force	14
Innovation and Technology (EX) Task Force	8
Internal Administration (EX1) Subcommittee	13
International Insurance Relations (G) Committee	86
International Regulatory Cooperation (G) Working Group	86
Investment Reporting (E) Subgroup	67
Investment Risk-Based Capital (E) Working Group	70
IT Examination (E) Working Group	78
IUL Illustration (A) Subgroup	20

L

Life Actuarial (A) Task Force	19
Life Insurance and Annuities (A) Committee	15
Life Insurance Buyer's Guide (A) Working Group	17
Life Insurance Illustration Issues (A) Working Group	17
Life Risk-Based Capital (E) Working Group	70
Liquidity Assessment (EX) Subgroup	6
Long Term Care Insurance (B/E) Task Force	27, 79
Longevity Risk (A/E) Subgroup	20, 71
Long-Term Care Actuarial (B) Working Group	26
Long-Term Care Benefit (B) Subgroup	32
Long-Term Care Guidance Manual (B) Subgroup	25
Long-Term Care Innovation (B) Subgroup	32
Long-Term Care Pricing (B) Subgroup	27
Long-Term Care Valuation (B) Subgroup	27

M

Market Actions (D) Working Group	48
Market Analysis Procedures (D) Working Group	49
Market Conduct Annual Statement Blanks (D) Working Group	50
Market Conduct Examination Standards (D) Working Group	50
Market Information Systems (D) Task Force	55
Market Regulation and Consumer Affairs (D) Committee	48
Market Regulation Certification (D) Working Group	51
Medical Loss Ratio Quality Improvement Activities (B) Subgroup	22

Medical Professional Liability (C) Working Group	35
Members By Zones	90
Midwest Zone	90
Model #22 (B) Subgroup	30
Model Law Review (A) Subgroup	18
Mortgage Guaranty Insurance (E) Working Group	62

N

NAIC/AICPA (E) Working Group	62
NAIC/American Indian and Alaska Native Liaison Committee	88
NAIC/Consumer Liaison Committee	87
NAIC/IAIABC Joint (C) Working Group	47
NAIC/Industry Liaison Committee	88
NAIC/State Government Liaison Committee	89
National Treatment & Coordination (E) Working Group	63
Northeast Zone	90

O

Operational Efficiencies (EX) Subgroup	11
Operational Risk (E) Subgroup	72
ORSA Implementation (E) Subgroup	61

P

PBR Implementation (EX) Task Force	12
PBR Review (EX) Working Group	12
PBR Review Procedures (EX) Subgroup	12
Pre-Dispute Mandatory Arbitration Clauses (D) Working Group ..	51
Privacy Disclosures (D) Working Group	52
Producer Licensing (D) Task Force	56
Promoting Appropriate Sales Practices in Life Insurance and Annuities (A) Working Group	18
Property and Casualty Insurance (C) Committee	34
Property and Casualty Risk-Based Capital (E) Working Group ...	73
Public Adjuster (C/D) Working Group	52

Q

Qualified Jurisdiction (E) Working Group	83
--	----

R

Receivership and Insolvency (E) Task Force	80
Receivership Financial Analysis (E) Working Group	81
Receivership Model Law (E) Working Group	81
Receivership Technology and Administration (E) Working Group	81
Regulatory Framework (B) Task Force	28
Reinsurance (E) Task Force	82

Reinsurance Financial Analysis (E) Working Group	83
Reinsurance Investment Security (E) Subgroup	83
Restricted Asset (E) Subgroup	68
Risk Retention (C) Working Group	38
Risk Retention Group (E) Task Force	84
Risk-Focused Surveillance (E) Working Group	64
Risk-Limiting Contracts (E) Working Group	64

S

Senior Issues (B) Task Force	31
Sharing Economy (C) Working Group	39
Short Duration Long-Term Care Policies (B) Subgroup	33
Southeast Zone	90
Speed to Market (EX) Working Group	11
State Rate Review (B) Subgroup	26
Statistical Data (C) Working Group	42
Statutory Accounting Principles (E) Working Group	68
Stress Testing (E) Subgroup	72
Surplus Lines (C) Task Force	43
Surplus Lines (C) Working Group	43

T

Technical Consulting (EX1) Working Group	14
Terrorism Insurance Implementation (C) Working Group	39
Title Affiliated Business Process Review (C) Working Group	45
Title Insurance (C) Task Force	44
Title Insurance Consumer Shopping Tools (C) Working Group ...	45
Title Insurance Financial Reporting (C) Working Group	45
Transparency and Readability of Consumer Information (C) Working Group	40
Travel Insurance (C) Working Group	40

U

Uniform Education (D) Working Group	57
Uniform Licensing (D) Working Group	58

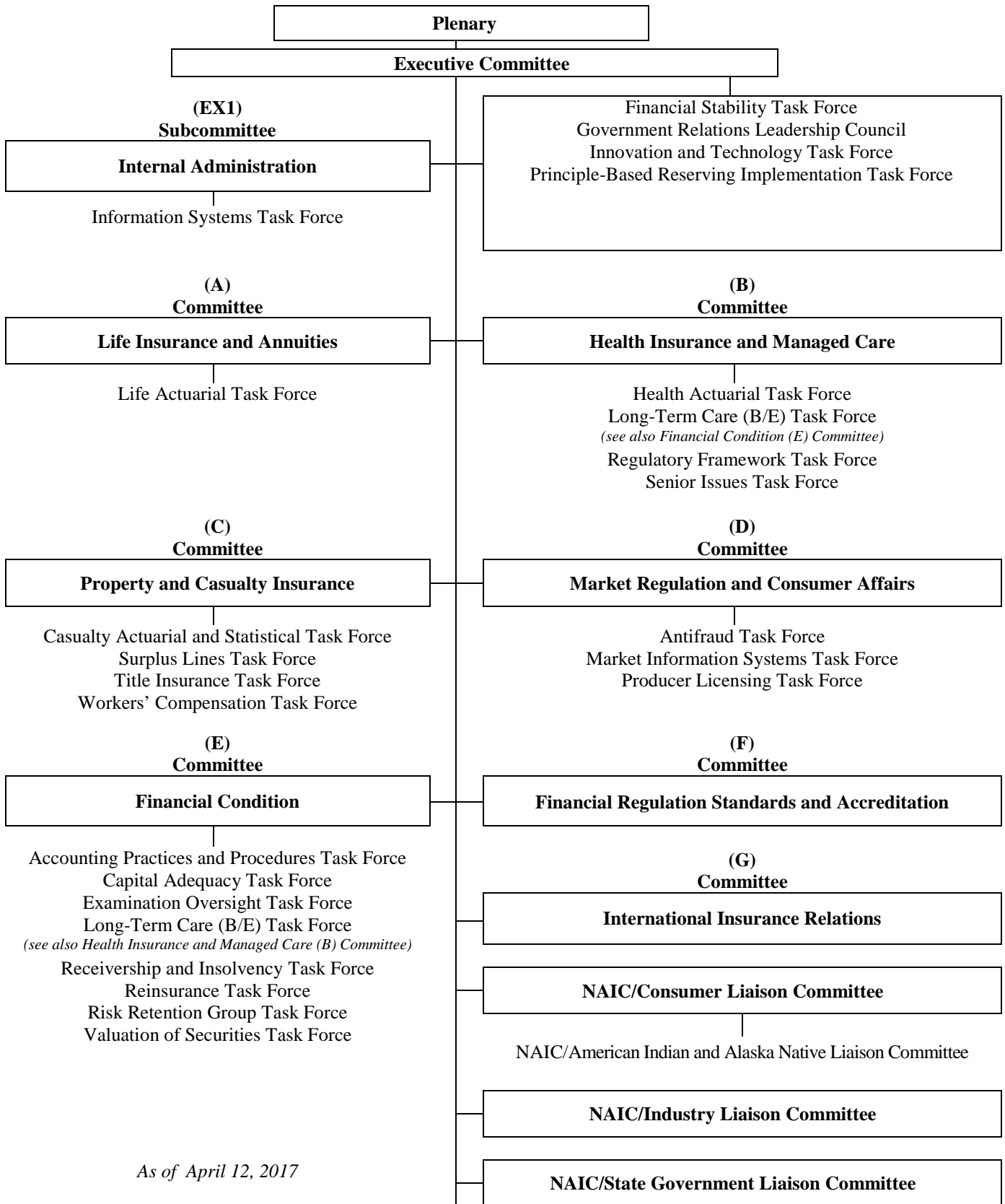
V

Valuation Analysis (E) Working Group	65
Valuation of Securities (E) Task Force	84
Variable Annuities Issues (E) Working Group	65
VM-22 (A) Subgroup	20

W

Western Zone	90
Workers' Compensation (C) Task Force	46

2017 Committee Structure



2017 EXECUTIVE (EX) COMMITTEE

Ted Nickel, President	Wisconsin
Julie Mix McPeak, President-Elect	Tennessee
Eric A. Cioppa, Vice President	Maine
Raymond G. Farmer, Secretary-Treasurer	South Carolina

Most Recent Past President

James J. Donelon	Louisiana
------------------	-----------

Northeast Zone

Al Redmer Jr., Chair	Maryland
Katharine L. Wade, Vice Chair	Connecticut
Roger A. Sevigny, Secretary	New Hampshire

Southeast Zone

Jim L. Ridling, Chair	Alabama
Mike Chaney, Vice Chair	Mississippi
Jacqueline K. Cunningham, Secretary	Virginia

Midwest Zone

Ken Selzer, Chair	Kansas
John D. Doak, Vice Chair	Oklahoma
Stephen W. Robertson, Secretary	Indiana

Western Zone

Dave Jones, Chair	California
Todd E. Kiser, Vice Chair	Utah
Dean L. Cameron, Secretary	Idaho

Staff Support: Andrew J. Beal/Kay Noonan

As of 10/2/2017

FINANCIAL STABILITY (EX) TASK FORCE

Peter Hartt, Chair	New Jersey
Doug Slape, Vice Chair	Texas
Dave Jones	California
Katharine L. Wade	Connecticut
David Altmaier	Florida
Eric A. Cioppa	Maine
Gary Anderson	Massachusetts
Chlora Lindley-Myers	Missouri
Bruce R. Ramage	Nebraska
Barbara D. Richardson	Nevada
Roger A. Sevigny	New Hampshire
Maria T. Vullo	New York
Mark O. Rabauliman	Northern Mariana Islands
Jessica Altman	Pennsylvania
Elizabeth Kelleher Dwyer	Rhode Island
Ted Nickel	Wisconsin

NAIC Support Staff: Elise Liebers/John Hopman/Mark Sagat/Todd Sells

Liquidity Assessment (EX) Subgroup

of the Financial Stability (EX) Task Force

Justin Schrader, Chair	Nebraska
Kathy Belfi/John Loughran	Connecticut
Philip Barlow	District of Columbia
Ray Spudeck	Florida
Bruce Sartain/Vincent Tsang	Illinois
Fred Andersen	Minnesota
James V. Regalbutto/William Carmello	New York
Doug Slape/Mike Boerner	Texas

NAIC Support Staff: Elise Liebers/Ani Verma/Todd Sells

GOVERNMENT RELATIONS (EX) LEADERSHIP COUNCIL

Ted Nickel, Chair	Wisconsin
Julie Mix McPeak, Vice Chair	Tennessee
Allen W. Kerr	Arkansas
Katharine L. Wade	Connecticut
David Altmaier	Florida
Ken Selzer	Kansas
James J. Donelon	Louisiana
Eric A. Cioppa	Maine
Al Redmer Jr.	Maryland
John D. Doak	Oklahoma
Jessica Altman	Pennsylvania
Raymond G. Farmer	South Carolina
Todd E. Kiser	Utah
Mike Kreidler	Washington
Tom Glause	Wyoming

NAIC Support Staff: Ethan Sonnichsen

INNOVATION AND TECHNOLOGY (EX) TASK FORCE

Patrick M. McPharlin, Chair	Michigan
Jennifer Hammer, Vice Chair	Illinois
Jim L. Ridling	Alabama
Lori K. Wing-Heier	Alaska
Peter Fuimaono	American Samoa
Dave Jones	California
Marguerite Salazar	Colorado
Katharine L. Wade	Connecticut
Stephen C. Taylor	District of Columbia
David Altmaier	Florida
Gordon I. Ito	Hawaii
Dean L. Cameron	Idaho
Doug Ommen	Iowa
Ken Selzer	Kansas
James J. Donelon	Louisiana
Eric A. Cioppa	Maine
Gary Anderson	Massachusetts
Mike Chaney	Mississippi
Chlora Lindley-Myers	Missouri
Matthew Rosendale	Montana
Bruce R. Ramage	Nebraska
Barbara D. Richardson	Nevada
Roger A. Sevigny	New Hampshire
Richard J. Badolato	New Jersey
John G. Franchini	New Mexico
Jon Godfread	North Dakota
Jillian Froment	Ohio
John D. Doak	Oklahoma
Jean Straight	Oregon
Elizabeth Kelleher Dwyer	Rhode Island
Raymond G. Farmer	South Carolina
Larry Deiter	South Dakota
Julie Mix McPeak	Tennessee
Kent Sullivan	Texas
Todd E. Kiser	Utah

NAIC Support Staff: Scott Morris/Denise Matthews

Big Data (EX) Working Group

of the Innovation and Technology (EX) Committee

TBD, Chair	TBD
Elizabeth Kelleher Dwyer, Vice Chair	Rhode Island
Charles Angell/Dan Davis	Alabama
Lori K. Wing-Heier	Alaska
Dave Jones/Joel Laucher	California
Katharine L. Wade	Connecticut
Franklin T. Pyle	Delaware
Stephen C. Taylor	District of Columbia
Belinda Miller	Florida
Brett Gerger/Michael Rohan	Illinois
Rich Piazza	Louisiana
Benjamin Yardley	Maine
Robert Baron	Maryland
Rhonda J. Fossitt	Michigan
Martin Fleischhacker/Pam Gergen	Minnesota
Brent Kabler/Angela Nelson	Missouri
Rajat Jain/Gennady Stolyarov	Nevada
Roger A. Sevigny	New Hampshire
Richard J. Badolato	New Jersey
Jillian Froment	Ohio
John D. Doak	Oklahoma
Michael McKenney	Pennsylvania
Kendall Buchanan	South Carolina
J'ne Byckovski/Leah Gillum	Texas
Brett J. Barratt	Utah
Michael S. Pieciak	Vermont
Mike Kreidler	Washington

NAIC Staff Support: Tim Mullen/Kris DeFrain/Denise Matthews/Randy Helder

Cybersecurity (EX) Working Group

of the Innovation and Technology (EX) Task Force

Raymond G. Farmer, Chair	South Carolina
Elizabeth Kelleher Dwyer, Vice Chair	Rhode Island
Lori K. Wing-Heier	Alaska
Allen W. Kerr	Arkansas
Dave Jones	California
Marguerite Salazar	Colorado
Katharine L. Wade	Connecticut
Trinidad Navarro	Delaware -
Stephen C. Taylor	District of Columbia
David Altmaier	Florida
Dean L. Cameron	Idaho
Jennifer Hammer	Illinois
Ken Selzer	Kansas
Nancy G. Atkins	Kentucky
Eric A. Cioppa	Maine
Al Redmer Jr.	Maryland
Patrick M. McPharlin	Michigan
Mike Rothman	Minnesota
Chloria Lindley-Myers	Missouri
Matthew Rosendale	Montana
Bruce R. Ramage	Nebraska
Barbara D. Richardson	Nevada
Roger A. Sevigny	New Hampshire
Richard J. Badolato	New Jersey
John G. Franchini	New Mexico
Jon Godfread	North Dakota
Mark O. Rabauliman	Northern Mariana Islands
Jillian Froment	Ohio
John D. Doak	Oklahoma
Jean Straight	Oregon
Jessica Altman	Pennsylvania
Larry Deiter	South Dakota
Julie Mix McPeak	Tennessee
Kent Sullivan	Texas
Todd E Kiser	Utah
Michael S. Pieciak	Vermont
Jacqueline K. Cunningham	Virginia
Mike Kreidler	Washington
Ted Nickel	Wisconsin

NAIC Support Staff: Eric Nordman/Sara Robben/ Cody Steinwand

Speed to Market (EX) Working Group

of the Innovation and Technology (EX) Task Force

John G. Franchini, Chair	New Mexico
Lori K. Wing-Heier	Alaska
Allen W. Kerr	Arkansas
Trinidad Navarro	Delaware
Stephen C. Taylor	District of Columbia
Dean L. Cameron	Idaho
Jennifer Hammer	Illinois
Ken Selzer	Kansas
Mike Rothman	Minnesota
Chlora Lindley-Myers	Missouri
Roger A. Sevigny	New Hampshire
Mike Cuasey	North Carolina
Jon Godfread	North Dakota
Mark O. Rabauliman	Northern Mariana Islands
Jillian Froment	Ohio
Kent Sullivan	Texas
Todd E. Kiser	Utah
Jacqueline K. Cunningham	Virginia
Allan L. McVey	West Virginia

NAIC Staff Support: Joy Morrison/Bridget Kieras

Operational Efficiencies (EX) Subgroup

of the Speed to Market (EX) Working Group

Maureen Motter, Chair	Ohio
William Lacy/Dan Honey	Arkansas
Dave Jones	California
Shirley Taylor	Colorado
Katharine L. Wade	Connecticut
Stephen C. Taylor	District of Columbia
John Gatlin/Cindy Colonius	Illinois
Ronald Coleman	Maryland
Tammy Lohmann	Minnesota
Angela Nelson	Missouri
Bruce Ramge	Nebraska
Rajat Jain	Nevada
Gerry Scattaglia	New York
Ted Hamby	North Carolina
Jon Godfread	North Dakota
John Doak	Oklahoma
TK Keen	Oregon
Miriam Ortiz	Puerto Rico
TBD	Texas
Rebecca Nichols	Virginia
Lichiou Lee	Washington
Susan Ezalarab	Wisconsin

NAIC Staff Support: Joy Morrison

PRINCIPLE-BASED RESERVING IMPLEMENTATION (EX) TASK FORCE

Eric A. Cioppa, Co-Chair	Maine
Bruce R. Ramage, Co-Chair	Nebraska
Jim L. Ridling	Alabama
Dave Jones	California
Katharine L. Wade	Connecticut
David Altmaier	Florida
Doug Ommen	Iowa
Jennifer Hammer	Illinois
Ken Selzer	Kansas
Chlora Lindley-Myers	Missouri
Richard J. Badolato	New Jersey
Jillian Froment	Ohio
Julie Mix McPeak	Tennessee
Kent Sullivan	Texas
Jacqueline K. Cunningham	Virginia

NAIC Support Staff: Kris DeFrain/Dan Daveline

PBR Review (EX) Working Group

Mike Boerner, Chair	Texas
Rachel Hemphill/Susan Bernard/Benjamin Bock	California
Wanchin Chou	Connecticut
Lisa Parker	Florida
Mike Yanacheak	Iowa
Richard Ramos/Nicole Boyd/Chris Buchanan	Kansas
William Leung	Missouri
William Carmello	New York
Dwight Radel/Pete Weber	Ohio

NAIC Staff Support: Larry Bruning/Reggie Mazyck

PBR Review Procedures (EX) Subgroup

of the PBR Review (EX) Working Group

Pete Weber, Chair	Ohio
Susan Bernard/Rachel Hemphill/Benjamin Bock	California
Michael Colburn	Connecticut
Lisa Parker	Florida
Mike Yanacheak	Iowa
William Leung	Missouri
Rhonda Ahrens	Nebraska
William Carmello	New York
Mike Boerner	Texas
Tomasz Serbinowski	Utah
Craig Chupp	Virginia

Staff Support: Larry Bruning/Reggie Mazyck

INTERNAL ADMINISTRATION (EX1) SUBCOMMITTEE

Ted Nickel, Chair	Wisconsin
Julie Mix McPeak, Vice Chair	Tennessee
Katharine L. Wade	Connecticut
Dean L. Cameron	Idaho
Ken Selzer	Kansas
James J. Donelon	Louisiana
Eric A. Cioppa	Maine
Raymond G. Farmer	South Carolina

NAIC Support Staff: Andrew J. Beal/Kay Noonan/Jim Woody

AUDIT COMMITTEE

Raymond G. Farmer, Chair	South Carolina
David Altmaier	Florida
Ken Selzer	Kansas
Eric A. Cioppa	Maine

NAIC Support Staff: Jim Woody

INFORMATION SYSTEMS (EX1) TASK FORCE

Al Redmer Jr., Chair	Maryland
Lori K. Wing-Heier, Vice Chair	Alaska
Allen W. Kerr	Arkansas
Dave Jones	California
Ken Selzer	Kansas
Roger A. Sevigny	New Hampshire
John G. Franchini	New Mexico
Mark O. Rabauliman	Northern Mariana Islands
Jillian Froment	Ohio
John D. Doak	Oklahoma
Jacqueline K. Cunningham	Virginia

NAIC Support Staff: Cheryl McGee

Technical Consulting (EX1) Working Group

of the Information Systems (EX1) Task Force

David Noronha, Chair	California
Letty Hardee	Arkansas
Paula Keen	Maryland
Angela Dingus	Ohio

NAIC Support Staff: Cheryl McGee

LIFE INSURANCE AND ANNUITIES (A) COMMITTEE

Bruce R. Ramage, Chair	Nebraska
Dean L. Cameron, Vice Chair	Idaho
Jim L. Ridling	Alabama
Dave Jones	California
Stephen C. Taylor	District of Columbia
David Altmaier	Florida
Ralph T. Hudgens	Georgia
Doug Ommen	Iowa
James J. Donelon	Louisiana
Mike Rothman	Minnesota
Jon Godfread	North Dakota
Maria T. Vullo	New York
Jillian Froment	Ohio
Elizabeth Kelleher Dwyer	Rhode Island
Julie Mix McPeak	Tennessee

NAIC Support Staff: Jennifer R. Cook /Jolie H. Matthews

Annuity Disclosure (A) Working Group *of the Life Insurance and Annuities (A) Committee*

Mike Yanacheak, Chair	Iowa
Chris Struk	Florida
Julie Holmes and Craig Van Aalst	Kansas
Devin L. Rhoad, Sr.	Maryland
John Robinson	Minnesota
Frank Stone	Oklahoma
Sarah Neil/ Matt Gendron	Rhode Island
Doug Danzeiser/Phil Reyna	Texas

NAIC Support Staff: Jennifer Cook

Annuity Suitability (A) Working Group *of the Life Insurance and Annuities (A) Committee*

Dean L. Cameron, Chair	Idaho
Doug Ommen, Vice Chair	Iowa
Jodi Lerner	California
Frank Pyle	Delaware
Tate Flott/Stacy Rinehart	Kansas
Devin Rhoad	Maryland
Catherine Kirby	Michigan
Matt Holman	Nebraska
Keith Nyhan	New Hampshire
James Regalbuto	New York
Frank Stone	Oklahoma
Elizabeth Kelleher Dwyer	Rhode Island
Michael Humphreys/Lorrie Brouse	Tennessee
Richard Wicka	Wisconsin

NAIC Support Staff: Jolie H. Matthews

LIFE INSURANCE AND ANNUITIES (A) COMMITTEE

(Continued)

Life Insurance Buyer's Guide (A) Working Group

of the Life Insurance and Annuities (A) Committee

Mary Mealer, Chair	Missouri
Teresa Winer	Georgia
Matt Holman	Nebraska
James Regalbuto	New York
Jana Jarrett	Ohio
David J. Buono Jr.	Pennsylvania
Elizabeth Kelleher/Matt Gendron/Sarah Neil	Rhode Island

NAIC Support Staff: Jennifer Cook

Life Insurance Illustration Issues (A) Working Group

of the Life Insurance and Annuities (A) Committee

Richard Wicka, Chair	Wisconsin
Perry Kupferman/Jodi Lerner	California
Chris Struk	Florida
Teresa Winer	Georgia
Mike Yanacheak	Iowa
Mary Mealer	Missouri
Bruce R. Ramge/Matt Holman	Nebraska
Jana Jarrett/Tynesia Dorsey	Ohio
Michael Humphreys	Tennessee
Jan Graeber/Phil Reyna/Raja Malkani	Texas
Jennifer Stegall	Wisconsin

NAIC Support Staff: Jennifer Cook

LIFE INSURANCE AND ANNUITIES (A) COMMITTEE

(Continued)

Model Law Review (A) Subgroup

of the Life Insurance and Annuities (A) Committee

Michael Kakuk, Chair	Montana
Perry Kupferman	California
Chris Struk and James Walker	Florida
Rhonda Ahrens	Nebraska
Kaycee Wolf	Tennessee

NAIC Support Staff: Jennifer Cook

Promoting Appropriate Sales Practices in Life Insurance and Annuities (A) Working Group

of the Life Insurance and Annuities (A) Committee

Michelle Rafeld, Chair	Ohio
Michael Conway/Jason Lapham	Colorado
Greg Thomas	Florida
Elaine Mellon	Idaho
James J. Donelon	Louisiana
Matt Holman	Nebraska
Richard Blackwell	Oregon
Matt Gendron/Sarah Neil	Rhode Island
Tanji Northrup	Utah
Richard Wicka	Wisconsin

NAIC Support Staff: Jennifer Cook

LIFE INSURANCE AND ANNUITIES (A) COMMITTEE
(Continued)

LIFE ACTUARIAL (A) TASK FORCE

Kent Sullivan, Chair	Texas
Jillian Froment, Vice Chair	Ohio
Lori K. Wing-Heier	Alaska
Jim L. Ridling	Alabama
Dave Jones	California
Marguerite Salazar	Colorado
Katharine L. Wade	Connecticut
David Altmaier	Florida
Doug Ommen	Iowa
Jennifer Hammer	Illinois
Stephen W. Robertson	Indiana
Ken Selzer	Kansas
Mike Rothman	Minnesota
Chlora Lindley-Myers	Missouri
Bruce R. Range	Nebraska
Richard J. Badolato	New Jersey
Maria T. Vullo	New York
John D. Doak	Oklahoma
Jacqueline K. Cunningham	Virginia

NAIC Support Staff: Reggie Mazyck/Eric King

Experience Reporting (A) Subgroup
of the Life Actuarial (A) Task Force

Fred Andersen, Chair	Minnesota
Perry Kupferman	California
Nicole Boyd	Kansas
William Carmello	New York
Mike Boerner	Texas

NAIC Support Staff: Reggie Mazyck

LIFE INSURANCE AND ANNUITIES (A) COMMITTEE

(Continued)

IUL Illustration (A) Subgroup

of the Life Actuarial (A) Task Force

Fred Andersen, Chair	Minnesota
Ted Chang	California
Bob Chester	Connecticut
Mike Yanacheak	Iowa
Rhonda Ahrens	Nebraska
William Carmello	New York
Pete Weber	Ohio
Jan Graeber/Phil Reyna	Texas
Craig Chupp	Virginia

NAIC Support Staff: Reggie Mazyck

Joint Longevity Risk (A/E) Subgroup

of the Life Actuarial (A) Task Force and Life Risk-Based Capital (E) Working Group

See also Financial Condition (E) Committee

VM-22 (A) Subgroup

of the Life Actuarial (A) Task Force

John Robinson, Chair	Minnesota
Mike Yanacheak	Iowa
Nicole Boyd	Kansas
William Leung	Missouri
Rhonda Ahrens	Nebraska
Brendan Peppard	New Jersey
William Carmello	New York
Tomasz Serbinowski	Utah

NAIC Support Staff: Reggie Mazyck

HEALTH INSURANCE AND MANAGED CARE (B) COMMITTEE

Al Redmer Jr., Chair	Maryland
Lori K. Wing-Heier, Vice Chair	Alaska
Leslie R. Hess	Arizona
Marguerite Salazar	Colorado
Katharine L. Wade	Connecticut
Dean L. Cameron	Idaho
Jennifer Hammer	Illinois
Nancy G. Atkins	Kentucky
Roger A. Sevigny	New Hampshire
Maria T. Vullo	New York
Jessica Altman	Pennsylvania
Larry Deiter	South Dakota
Todd E. Kiser	Utah
Osbert E. Potter	Virgin Islands
Mike Kreidler	Washington

NAIC Support Staff: Jolie H. Matthews/Brian R. Webb/Jennifer R. Cook

CO-OP Solvency and Receivership (B) Subgroup

Doug Ommen, Chair	Iowa
Katharine L. Wade, Vice Chair	Connecticut
Leslie Hess	Arizona
Marguerite Salazar	Colorado
Dean L. Cameron	Idaho
Jennifer Hammer	Illinois
Nancy G. Atkins	Kentucky
James J. Donelon	Louisiana
Eric A. Cioppa	Maine
Al Redmer, Jr.	Maryland
Gary Anderson	Massachusetts
Patrick M. McPharlin	Michigan
Matthew Rosendale	Montana
Bruce R. Ramge	Nebraska
Barbara D. Richardson	Nevada
Roger A. Sevigny	New Hampshire
Richard J. Badolato	New Jersey
John G. Franchini	New Mexico
Maria T. Vullo	New York
Jillian Froment	Ohio
Jean Straight	Oregon
Raymond G. Farmer	South Carolina
Julie Mix McPeak	Tennessee
Todd E. Kiser	Utah
Allan L. McVey	West Virginia
Ted Nickel	Wisconsin

NAIC Staff Support: Brian Webb/Kay Noonan/ Jane Koenigsman

HEALTH INSURANCE AND MANAGED CARE (B) COMMITTEE

(Continued)

Health Care Reform Regulatory Alternatives (B) Working Group

Ted Nickel, Chair	Wisconsin
Roger A. Seigny, Vice Chair	New Hampshire
Lori K. Wing-Heier	Alaska
Susan Jennette	Delaware
Craig Wright	Florida
Kathy McGill	Idaho
Paulette Dove	Illinois
Alexandria Peck	Indiana
Julie Holmes	Kansas
Robert Wake	Maine
Chloria Lindley-Myers	Missouri
Matthew Rosendale	Montana
Martin Swanson	Nebraska
Mackay Moore	Nevada
Brendan Peppard	New Jersey
Troy Oechsner	New York
Jon Godfread	North Dakota
Mark O. Rabauliman	Northern Mariana Islands
James Mills	Oklahoma
Katie Dzurec	Pennsylvania
Kendall Buchanan	South Carolina
Melissa Klemann	South Dakota
Julie Mix McPeak	Tennessee
Jan Graeber	Texas
Tanji Northrup	Utah
Osbert E. Potter	Virgin Islands
Molly Nollette	Washington
Tom Glause	Wyoming

NAIC Support Staff: Jolie H. Matthews

Medical Loss Ratio Quality Improvement Activities (B) Subgroup

of the Health Insurance and Managed Care (B) Committee

Dean L. Cameron, Chair	Idaho
Jessica Altman, Vice Chair	Pennsylvania
Sheri Shudde	Arizona
Karl Knable	Indiana
Molly White	Missouri
Melinda Domzalski-Hansen	Minnesota
Marygrace Pesce	New Jersey
Terry Seaton	New Mexico
Stephen Wiest	New York
Hasije P. Harris	North Carolina
Gayle L. Woods/Scott Martin	Oregon
J.P. Wieske	Wisconsin

NAIC Support Staff: Brian R. Webb

HEALTH INSURANCE AND MANAGED CARE (B) COMMITTEE

(Continued)

HEALTH ACTUARIAL (B) TASK FORCE

Patrick M. McPharlin, Chair	Michigan
David Altmaier, Vice Chair	Florida
Jim L. Ridling	Alabama
Lori K. Wing-Heier	Alaska
Dave Jones	California
Marguerite Salazar	Colorado
Katharine L. Wade	Connecticut
Stephen C. Taylor	District of Columbia
Dean L. Cameron	Idaho
Stephen W. Robertson	Indiana
Ken Selzer	Kansas
Eric A. Cioppa	Maine
Mike Rothman	Minnesota
Bruce R. Range	Nebraska
Richard J. Badolato	New Jersey
John G. Franchini	New Mexico
Maria T. Vullo	New York
Jillian Froment	Ohio
John D. Doak	Oklahoma
Jean Straight	Oregon
Jessica Altman	Pennsylvania
Raymond G. Farmer	South Carolina
Kent Sullivan	Texas
Todd E. Kiser	Utah
Jacqueline K. Cunningham	Virginia
Ted Nickel	Wisconsin

NAIC Support Staff: Eric King

HEALTH INSURANCE AND MANAGED CARE (B) COMMITTEE

(Continued)

Cancer Claims Cost Table (B) Subgroup

of the Health Actuarial (B) Task Force

Tomasz Serbinowski, Chair	Utah
Ali Zaker-Shahrak	California
Teresa Winer	Georgia
Rhonda Ahrens	Nebraska
William Carmello	New York

NAIC Staff Support: Eric King

Health Care Reform Actuarial (B) Working Group

of the Health Actuarial (B) Task Force

David Shea, Chair	Virginia
Steve Ostlund	Alabama
Jacob Lauten	Alaska
Mary Ellen Breault	Connecticut
Wes Trexler	Idaho
Nicole Boyd	Kansas
Kristi Bohn	Minnesota
Brendan Peppard	New Jersey
Frank Horn	New York
Laura Miller/Nancy Hubler	Ohio
Frank Stone	Oklahoma
Andrew Dvorine	South Carolina
Jan Graeber/Raja Malkani	Texas
Jaakob Sundberg	Utah
J.P. Wieske	Wisconsin

NAIC Support Staff: Eric King

Actuarial Value (B) Subgroup

of the Health Care Reform Actuarial (B) Working Group

Kevin Dyke, Chair	Michigan
Wanchin Chou	Connecticut
Marti Hooper	Maine
Kristi Bohn	Minnesota
Andrew Dvorine/ Shari Miles	South Carolina
Raja Malkani	Texas
David Shea	Virginia

NAIC Support Staff: Eric King

HEALTH INSURANCE AND MANAGED CARE (B) COMMITTEE

(Continued)

Health Reserves (B) Subgroup

of the Health Care Reform Actuarial (B) Working Group

Steve Ostlund, Chair)	Alabama
Lisa Parker	Florida
Rhonda Ahrens	Nebraska
William Carmello	New York
Mike Boerner	Texas

NAIC Support Staff: Eric King

Individual Disability Valuation Table Implementation (B) Subgroup

of the Health Actuarial (B) Task Force

Steve Ostlund, Chair	Alabama
Perry Kupferman	California
Lisa Parker	Florida
Nicole Boyd	Kansas
Rhonda Ahrens	Nebraska
William Carmello	New York
Mike Boerner	Texas

NAIC Support Staff: Eric King

Joint Long-Term Care Guidance Manual (B) Subgroup

of the Senior Issues (B) Task Force and the Health Actuarial (B) Task Force

Jan Graeber, Chair	Texas
Steven Ostlund	Alabama
Perry Kupferman	California
Mary Ellen Breault	Connecticut
Rich Robleto	Florida
Colin Hayashida / Kathleen Nakasone	Hawaii
Becky Blum	Iowa
Stephanie McGaughey-Bowker	Kentucky
Marti Hooper/Sherry Ingalls	Maine
Fred Andersen	Minnesota
Rhonda Ahrens	Nebraska
Terry Seaton	New Mexico
Elizabeth Kelleher Dwyer	Rhode Island
Andrew Dvorine	South Carolina
Jan Graeber/Carol Lo	Texas
Bianca Stoner	Washington

NAIC Support Staff: Eric King/Brian Webb

HEALTH INSURANCE AND MANAGED CARE (B) COMMITTEE

(Continued)

State Rate Review (B) Subgroup

of the Health Care Reform Actuarial (B) Working Group

David Shea, Chair	Virginia
Jacob Lauten	Alaska
Dan Greer	California
Paul Lombardo	Connecticut
Wes Trexler	Idaho
Nicole Boyd	Kansas
Marti Hooper	Maine
Kevin Dyke	Michigan
Kristi Bohn	Minnesota
Annette James	Nevada
David Sky	New Hampshire
Frank Horn	New York
Laura Miller/Nancy Hubler	Ohio
Michael Sink	Oregon
Andrew Dvorine	South Carolina
Jan Graeber	Texas
Jaakob Sundberg	Utah

NAIC Support Staff: Eric King

Long- Term Care Actuarial (B) Working Group

of the Health Actuarial (B) Task Force

Perry Kupferman, Chair	California
Steve Ostlund	Alabama
Paul Lombardo	Connecticut
Lisa Parker	Florida
Nicole Boyd	Kansas
Marti Hooper	Maine
Kristi Bohn	Minnesota
Rhonda Ahrens	Nebraska
Terry Seaton	New Mexico
William Carmello	New York
Laura Miller	Ohio
Frank Stone	Oklahoma
Katie Dzurec	Pennsylvania
Andrew Dvorine	South Carolina
Jan Graeber/Mike Boerner	Texas
Tomasz Serbinowski	Utah

NAIC Support Staff: Eric King

HEALTH INSURANCE AND MANAGED CARE (B) COMMITTEE

(Continued)

Long-Term Care Valuation (B) Subgroup

of the Long-Term Care Actuarial (B) Working Group

Perry Kupferman, Chair	California
Tricia Dave	Connecticut
Lisa Parker	Florida
Nicole Boyd	Kansas
Fred Andersen	Minnesota
Rhonda Ahrens	Nebraska
Annette James	Nevada
Terry Seaton	New Mexico
William Carmello	New York
Mike Boerner/Jan Graeber	Texas
Tomasz Serbinowski	Utah

NAIC Staff Support: Eric King

Long-Term Care Pricing (B) Subgroup

of the Long-Term Care Actuarial (B) Working Group

Jan Graeber, Chair	Texas
Jacob Lauten	Alaska
Perry Kupferman	California
Paul Lombardo	Connecticut
Craig Wright	Florida
Marti Hooper	Maine
Kristi Bohn	Minnesota
William Leung	Missouri
Rhonda Ahrens	Nebraska
David Sky	New Hampshire
Terry Seaton	New Mexico
Frank Horn	New York
Bob Potter	North Carolina
Laura Miller	Ohio
David Ball	Oregon
Andrew Dvorine	South Carolina
Tomasz Serbinowski	Utah

NAIC Staff Support: Eric King

LONG TERM CARE INSURANCE (B/E) TASK FORCE

See the Financial Condition (E) Committee

HEALTH INSURANCE AND MANAGED CARE (B) COMMITTEE

(Continued)

REGULATORY FRAMEWORK (B) TASK FORCE

Ted Nickel, Chair	Wisconsin
Marguerite Salazar, Vice Chair	Colorado
Lori K. Wing-Heier	Alaska
Dave Jones	California
Katharine L. Wade	Connecticut
Trinidad Navarro	Delaware
Stephen C. Taylor	District of Columbia
David Altmaier	Florida
Dean L. Cameron	Idaho
Jennifer Hammer	Illinois
Doug Ommen	Iowa
Ken Selzer	Kansas
Nancy G. Atkins	Kentucky
Eric A. Cioppa	Maine
Al Redmer Jr.	Maryland
Gary Anderson	Massachusetts
Mike Rothman	Minnesota
Mike Chaney	Mississippi
Chlora Lindley-Myers	Missouri
Matthew Rosendale	Montana
Bruce R. Ramage	Nebraska
Roger A. Sevigny	New Hampshire
John G. Franchini	New Mexico
Mike Causey	North Carolina
Jon Godfread	North Dakota
John D. Doak	Oklahoma
Jessica Altman	Pennsylvania
Larry Deiter	South Dakota
Kent Sullivan	Texas
Todd E. Kiser	Utah
Jacqueline K. Cunningham	Virginia
Mike Kreidler	Washington
Allan L. McVey	West Virginia

NAIC Support Staff: Jolie H. Matthews/Jennifer R. Cook

HEALTH INSURANCE AND MANAGED CARE (B) COMMITTEE

(Continued)

ERISA (B) Working Group

of the Regulatory Framework (B) Task Force

Robert Wake, Chair	Maine
Suzanne Tipton	Arkansas
Peg Brown	Colorado
Doug Ommen	Iowa
Julie Holmes/Cindy Hermes	Kansas
Korey Harvey	Louisiana
Kristi Bohn	Minnesota
Mary Mealer/Angela Nelson	Missouri
Michael Kakuk	Montana
Martin Swanson /Laura Arp	Nebraska
Amy L. Parks	Nevada
Terry Seaton	New Mexico
Ted Hamby	North Carolina
Michelle Brugh Rafeld	Ohio
Frank Stone	Oklahoma
Melissa Klemann	South Dakota
Doug Danzeiser/Angela Melina Raab	Texas
Tanji Northrup	Utah
Molly Nollette	Washington
Richard Wicka	Wisconsin

NAIC Staff Support: Jennifer R. Cook

HEALTH INSURANCE AND MANAGED CARE (B) COMMITTEE

(Continued)

Accident and Sickness Insurance Minimum Standards (B) Subgroup

of the Regulatory Framework (B) Task Force

J.P. Wieske, Chair	Wisconsin
Chris Struk/Andrew Marcus	Florida
Tom Carswell	Georgia
Mary Butler	Iowa
Korey Harvey	Louisiana
Bob Wake	Maine
Molly White/Mary Mealer/Angela Nelson	Missouri
Martin Swanson	Nebraska
Terry Seaton	New Mexico
Mike Rhoads	Oklahoma
Gayle Woods	Oregon
Kendall Buchanan	South Carolina
Tanji Northrup	Utah
Phil Keller	Vermont
Molly Nollette	Washington

NAIC Support Staff: Jolie H. Matthews

Model #22 (B) Subgroup

of the Regulatory Framework (B) Task Force

J.P. Wieske, Chair	Wisconsin
Sarah Bailey	Alaska
Kayte Fisher/Christopher Citko	California
Chris Struk	Florida
Tracy Swalwell	Iowa
Molly White/Mary Mealer/Angela Nelson/Amy Hoyt	Missouri
Martin Swanson	Nebraska
Andy Romero/Terry Seaton	New Mexico
Joel Sander	Oklahoma
Gayle L. Woods	Oregon
Andrea Philhower	Washington

NAIC Support Staff: Jolie H. Matthews

HEALTH INSURANCE AND MANAGED CARE (B) COMMITTEE

(Continued)

SENIOR ISSUES (B) TASK FORCE

Jessica Altman, Chair	Pennsylvania
David Altmaier, Vice Chair	Florida
Jim L. Ridling	Alabama
Lori K. Wing-Heier	Alaska
Leslie R. Hess	Arizona
Allen W. Kerr	Arkansas
Dave Jones	California
Marguerite Salazar	Colorado
Katharine L. Wade	Connecticut
Trinidad Navarro	Delaware
Stephen C. Taylor	District of Columbia
Gordon I. Ito	Hawaii
Dean L. Cameron	Idaho
Jennifer Hammer	Illinois
Stephen W. Robertson	Indiana
Doug Ommen	Iowa
Ken Selzer	Kansas
Nancy G. Atkins	Kentucky
James J. Donelon	Louisiana
Eric A. Cioppa	Maine
Al Redmer Jr.	Maryland
Patrick M. McPharlin	Michigan
Mike Rothman	Minnesota
Mike Chaney	Mississippi
Chlora Lindley-Myers	Missouri
Bruce R. Range	Nebraska
Roger A. Sevigny	New Hampshire
Richard J. Badolato	New Jersey
John G. Franchini	New Mexico
Mike Causey	North Carolina
Jon Godfread	North Dakota
Jillian Froment	Ohio
John D. Doak	Oklahoma
Jean Straight	Oregon
Larry Deiter	South Dakota
Julie Mix McPeak	Tennessee
Kent Sullivan	Texas
Todd E. Kiser	Utah
Jacqueline K. Cunningham	Virginia
Mike Kreidler	Washington
Ted Nickel	Wisconsin

NAIC Support Staff: David Torian

HEALTH INSURANCE AND MANAGED CARE (B) COMMITTEE

(Continued)

Long-Term Care Benefit (B) Subgroup

of the Senior Issues (B) Task Force

Fred Andersen, Chair	Minnesota
Tyler McKinney, Vice Chair	California
Steve Ostlund	Alabama
Craig Wright	Florida
Marti Hooper	Maine
Rhonda Ahrens	Nebraska
Jim Lavery	Pennsylvania
Jan Graeber	Texas
Tomasz Serbinowski	Utah
Mike Bryant	Washington

NAIC Support Staff: David Torian

Long-Term Care Innovation (B) Subgroup

of the Senior Issues (B) Task Force

Jessica Altman, Chair	Pennsylvania
Mike Rothman, Vice Chair	Minnesota
Katharine L. Wade	Connecticut
David Altmaier	Florida
Dean L. Cameron	Idaho
Jennifer Hammer	Illinois
Doug Ommen	Iowa
Eric A. Cioppa	Maine
Richard J. Badolato	New Jersey
Elizabeth Kelleher Dwyer	Rhode Island
Larry Deiter	South Dakota
Mike Kreidler	Washington

NAIC Support Staff: David Torian

HEALTH INSURANCE AND MANAGED CARE (B) COMMITTEE

(Continued)

Short Duration Long-Term Care Policies (B) Subgroup

of the Senior Issues (B) Task Force

Mary Ellen Breault, Chair	Connecticut
Tyler McKinney, Vice Chair	California
Craig Wright	Florida
Rebecca Vaughan	Indiana
Craig VanAalst	Kansas
Stephanie McGaughey-Bowker	Kentucky
Mary Mealer	Missouri
Martin Swanson	Nebraska
Jennifer Patterson	New Hampshire
Terry Seaton	New Mexico
Frank Stone	Oklahoma
Tracy Bixler	Pennsylvania
Doug Danzeiser	Texas
Jaakob Sundberg	Utah
J.P. Wieske	Wisconsin

NAIC Support Staff: David Torian

PROPERTY AND CASUALTY INSURANCE (C) COMMITTEE

John D. Doak, Chair	Oklahoma
David Altmaier, Vice Chair	Florida
Jim L. Ridling	Alabama
Katharine L. Wade	Connecticut
Jennifer Hammer	Illinois
James J. Donelon	Louisiana
Al Redmer Jr.	Maryland
Chlora Lindley-Myers	Missouri
Mike Chaney	Mississippi
Matthew Rosendale	Montana
John G. Franchini	New Mexico
Jean Straight	Oregon
Jessica Altman	Pennsylvania
Raymond G. Farmer	South Carolina
Larry Deiter	South Dakota

NAIC Support Staff: Aaron Brandenburg/ Kris DeFrain/Eric Nordman

Advisory Organization Examination Oversight (C) Working Group *of the Property and Casualty Insurance (C) Committee*

Timothy Schott, Chair	Maine
Michael Ricker	Alaska
William Lacy	Arkansas
George Bradner	Connecticut
Nathaniel Kevin Brown	District of Columbia
Amy Groszos	Florida
Michael P. Rohan	Illinois
Angela Nelson/Jim Mealer	Missouri
James Fox	New Hampshire
Joel Sander/Brian Gabbert	Oklahoma
Paula Pallozzi	Rhode Island
Daniel Nelson	South Dakota
Rebecca Nichols	Virginia
Mark Hooker	West Virginia

NAIC Support Staff: David Keleher/Aaron Brandenburg

PROPERTY AND CASUALTY INSURANCE (C) COMMITTEE

(Continued)

Medical Professional Liability (C) Working Group

of the Property and Casualty Insurance (C) Committee

John G. Franchini, Chair	New Mexico
James Mills, Vice Chair	Oklahoma
Trinidad Navarro	Delaware
Dean L. Cameron	Idaho
Jennifer Hammer	Illinois
Stephen Robertson/Amy Beard/Doug Webber	Indiana
Heather Droge	Kansas
Kevin Dyke	Michigan
Tammy Lohmann	Minnesota
Brent Kabler/Molly White	Missouri
Eric Slavich	Washington

NAIC Support Staff: Denise Matthews

Auto Insurance (C/D) Working Group

of the Property and Casualty Insurance (C) Committee and the Market Regulation and Consumer Affairs (D) Committee

Allen Kerr, Chair	Arkansas
Jean Straight, Vice Chair	Oregon
Charles Angell	Alabama
Dave Jones/Ken Allen	California
Bobbie Baca/Mike Conway	Colorado
Qing He	Connecticut
Ralph T. Hudgens	Georgia
Brett Gerger	Illinois
Warren Byrd	Louisiana
Richard Bradley	Massachusetts
Teri L. Morante	Michigan
Phillip Vigliaturo	Minnesota
Mike Chaney	Mississippi
Angela Nelson	Missouri
John G. Franchini	New Mexico
John D. Doak	Oklahoma
Michael McKenney	Pennsylvania
Paula Pallozzi	Rhode Island
Mark Worman	Texas
Tracy Klausmeier/Suzette Green-Wright	Utah
Rebecca Nichols	Virginia
Stacy Middleton	Washington
Roger Frings	Wisconsin

NAIC Support Staff: Aaron Brandenburg/Eric C. Nordman/Timothy B. Mullen

PROPERTY AND CASUALTY INSURANCE (C) COMMITTEE

(Continued)

Catastrophe Insurance (C) Working Group

of the Property and Casualty Insurance (C) Committee

David Altmaier, Chair	Florida
Charles Angell	Alabama
Emil R. Mackey	Alaska
Ron Dahlquist	California
George Bradner	Connecticut
Gordon I. Ito	Hawaii
Robert P. Rapp	Illinois
Heather Droge	Kansas
James J. Donelon	Louisiana
Joy Hatchette	Maryland
Matthew Mancini/Jerry Condon	Massachusetts
Mike Chaney	Mississippi
Angela Nelson	Missouri
Peter L. Hartt	New Jersey
Tom Botsko	Ohio
Cuc Nguyen/Brian Gabbert	Oklahoma
Paula Pallozzi	Rhode Island
Will Davis	South Carolina
Michael Humphreys	Tennessee
Nancy Olsen	Wyoming

NAIC Support Staff: Sara Robben

Climate Change and Global Warming (C) Working Group

of the Property and Casualty Insurance (C) Committee

Mike Kreidler, Chair	Washington
Dave Jones, Vice Chair	California
Katharine L. Wade/George Bradner	Connecticut
Peter Brickwedde	Minnesota
Jeff Barber	Montana
John G. Franchini	New Mexico
Marshal Bozzo	New York
Tracy Snow/Tom Botsko	Ohio
TK Keen	Oregon

NAIC Support Staff: Anne Obersteadt

PROPERTY AND CASUALTY INSURANCE (C) COMMITTEE

(Continued)

Creditor-Placed Insurance Model Act Review (C) Working Group

of the Property and Casualty Insurance (C) Committee

David Altmaier, Chair	Florida
Alex Romero	Alaska
Joel Laucher/Ken Allen	California
Kurt Swan	Connecticut
Sharon Shipp	District of Columbia
Brett Gerger/Jack Engle	Illinois
Ron Henderson	Louisiana
David Browning	Mississippi
Carrie Couch	Missouri
John G. Franchini	New Mexico
Buddy Combs	Oklahoma
Elizabeth Kelleher Dwyer	Rhode Island
Mark Worman/John Byckovski	Texas
Rebecca Nichols	Virginia
Roger Frings/Jill M. Kelly	Wisconsin

NAIC Support: Aaron Brandenburg

Crop Insurance (C) Working Group

of the Property and Casualty Insurance (C) Committee

Larry Deiter, Chair	South Dakota
Heather Droge	Kansas
Tammy Lohmann	Minnesota
Mike Chaney	Mississippi
Angela Nelson	Missouri
Bruce R. Range	Nebraska
Mike Andring	North Dakota
Cuc Nguyen/Brian Gabbert	Oklahoma
Jeff Baughman	Washington

NAIC Support Staff: Ann Farr/Jennifer Gardner

PROPERTY AND CASUALTY INSURANCE (C) COMMITTEE

(Continued)

Risk Retention (C) Working Group

of the Property and Casualty Insurance (C) Committee

David Provost, Chair	Vermont
Jill Jacobi	California
George Bradner/Janet Grace	Connecticut
Steve Kinion	Delaware
Sean O'Donnell/Dana Sheppard	District of Columbia
Robert Ridenour	Florida
Andrew Kurata	Hawaii
Heather Droge	Kansas
Arlene Knighten	Louisiana
Angela Nelson	Missouri
Steve Matthews	Montana
Omar D. Akel	Nevada
Marc Allen	New York
Joel Sander/Frank Stone	Oklahoma
Jay Branum	South Carolina
Michael Corbett	Tennessee
Travis Wegkamp	Utah
Eric Slavich	Washington

NAIC Support Staff: Aaron Brandenburg

PROPERTY AND CASUALTY INSURANCE (C) COMMITTEE

(Continued)

Sharing Economy (C) Working Group

of the Property and Casualty Insurance (C) Committee

Dave Jones, Chair	California
Marguerite Salazar, Vice Chair	Colorado
Lori Wing-Heier	Alaska
Katharine L. Wade/George Bradner	Connecticut
Joy Hatchette	Maryland
Rachel M. Davison	Massachusetts
John G. Franchini	New Mexico
Paul Zuckerman	New York
John D. Doak	Oklahoma
Paula Pallozzi	Rhode Island
Mark Worman	Texas
Rebecca Nichols	Virginia
Stacy Middleton	Washington

NAIC Support Staff: Jennifer Gardner/Aaron Brandenburg/Eric Nordman

Terrorism Insurance Implementation (C) Working Group

of the Property and Casualty Insurance (C) Committee

Martha Lees, Chair	New York
Jill Jacobi	California
Katharine L. Wade/George Bradner	Connecticut
Stephen C. Taylor/Angela King	District of Columbia
David Altmaier	Florida
Brett Gerger	Illinois
Heather Droge	Kansas
Gary Anderson/Christopher M. Joyce	Massachusetts
Angela Nelson	Missouri
Carl Sornson	New Jersey
Timothy Johnson	North Carolina
John D. Doak/Cuc Nguyen	Oklahoma
Paula Pallozzi	Rhode Island
Kent Sullivan/Mark Worman	Texas
Jacqueline K. Cunningham	Virginia
	New York

NAIC Support Staff: Eric C. Nordman/Aaron Brandenburg

PROPERTY AND CASUALTY INSURANCE (C) COMMITTEE

(Continued)

Transparency and Readability of Consumer Information (C) Working Group

of the Property and Casualty Insurance (C) Committee

Angela Nelson, Chair	Missouri
Ken Allen	California
Michael Conway/Bobbie Baca	Colorado
George Bradner	Connecticut
Jennifer Hammer/Brett Gerger	Illinois
Heather Droge	Kansas
Ron Henderson	Louisiana
Joy Hatchette	Maryland
Daniel Bryden	Minnesota
Kathy Shortt	North Carolina
Jana K. Jarrett	Ohio

NAIC Support Staff: Ann Farr/Sara Robben

Travel Insurance (C) Working Group

of the Property and Casualty Insurance (C) Committee

Al Redmer Jr., Chair	Maryland
David Altmaier, Vice-Chair	Florida
Susan Stapp	California
George Bradner	Connecticut
Colin B. Johnson, Sr.	District of Columbia
Gordon I. Ito	Hawaii
Mike Rohan	Illinois
James J. Donelon	Louisiana
Angela Nelson	Missouri
John G. Franchini	New Mexico
Timothy Johnson	North Carolina
John D. Doak	Oklahoma
Jessica Altman	Pennsylvania
Elizabeth Kelleher Dwyer/Matthew Gendron	Rhode Island
Todd E. Kiser	Utah
Rebecca Nichols	Virginia
Jim Freeburg	Washington

NAIC Support Staff: Denise Matthews and Aaron Brandenburg

PROPERTY AND CASUALTY INSURANCE (C) COMMITTEE

(Continued)

CASUALTY ACTUARIAL AND STATISTICAL (C) TASK FORCE

Jessica Altman, Chair	Pennsylvania
James J. Donelon, Vice Chair	Louisiana
Jim L. Ridling	Alabama
Lori K. Wing-Heier	Alaska
Dave Jones	California
Marguerite Salazar	Colorado
Katharine L. Wade	Connecticut
Stephen C. Taylor	District of Columbia
David Altmaier	Florida
Gordon I. Ito	Hawaii
Jennifer Hammer	Illinois
Ken Selzer	Kansas
Patrick M. McPharlin	Michigan
Mike Rothman	Minnesota
Chloria Lindley-Myers	Missouri
Richard J. Badolato	New Jersey
Maria T. Vullo	New York
Mike Causey	North Carolina
Jillian Froment	Ohio
John D. Doak	Oklahoma
Jean Straight	Oregon
Raymond G. Farmer	South Carolina
Kent Sullivan	Texas

NAIC Support Staff: Kris DeFrain/Jennifer Gardner

PROPERTY AND CASUALTY INSURANCE (C) COMMITTEE

(Continued)

Actuarial Opinion (C) Working Group

of the Casualty Actuarial and Statistical (C) Task Force

Julie Lederer, Chair	Missouri
Giovanni Muzzarelli	California
Mitchell Bronson	Colorado
Susan Gozzo Andrews	Connecticut
David Christhilf	District of Columbia
Judy Mottar	Illinois
Gordon Hay	Nebraska
Gloria Huberman	New York
Tom Botsko	Ohio
Frank Stone	Oklahoma
Kevin Clark	Pennsylvania
Jennifer Wu	Texas

NAIC Support Staff: Kris DeFrain

Statistical Data (C) Working Group

of the Casualty Actuarial and Statistical (C) Task Force

Carl Sornson, Chair	New Jersey
Charles Angell	Alabama
Wanchin Chou	Connecticut
David Christhilf	District of Columbia
Rich Piazza	Louisiana
Alexander Vajda/Anthony Yoder	New York
Tom Botsko/ Tom Hess	Ohio
Frank Stone	Oklahoma
David Dahl	Oregon
Brian Ryder	Texas
Eric Slavich	Washington

NAIC Staff Support: Libby Quinn

PROPERTY AND CASUALTY INSURANCE (C) COMMITTEE

(Continued)

SURPLUS LINES (C) TASK FORCE

James J. Donelon, Chair	Louisiana
John D. Doak, Vice Chair	Oklahoma
Jim L. Ridling	Alabama
Lori K. Wing-Heier	Alaska
Dave Jones	California
Marguerite Salazar	Colorado
Trinidad Navarro	Delaware
Gordon I. Ito	Hawaii
Jennifer Hammer	Illinois
Ken Selzer	Kansas
Nancy G. Atkins	Kentucky
Al Redmer Jr.	Maryland
Mike Chaney	Mississippi
Matthew Rosendale	Montana
Barbara D. Richardson	Nevada
Richard J. Badolato	New Jersey
Mark O. Rabauliman	Northern Mariana Islands
Elizabeth Kelleher Dwyer	Rhode Island
Larry Deiter	South Dakota
Kent Sullivan	Texas
Todd E. Kiser	Utah
Mike Kreidler	Washington
Allan L. McVey	West Virginia
Tom Glause	Wyoming

NAIC Support Staff: Bob Schump/Andy Daleo

Surplus Lines (C) Working Group

Stewart Guerin, Chair	Louisiana
Richard Schlesinger, Vice Chair	New Jersey
Maxine Froemling	Alaska
Emma Hirschhorn	California
Rolf Kaumann	Colorado
David Altmaier	Florida
Mark Ossi	Georgia
Kevin Fry	Illinois
Robert Macullar	Massachusetts
Maurice Morgenstern	New York
Joel Sander	Oklahoma
Lee Hill	South Carolina
Jeff Hunt	Texas
Doug Hartz	Washington

NAIC Support Staff: Bob Schump/Andy Daleo

PROPERTY AND CASUALTY INSURANCE (C) COMMITTEE

(Continued)

TITLE INSURANCE (C) TASK FORCE

Larry Deiter, Chair	South Dakota
David Altmaier, Vice Chair	Florida
Lori K. Wing-Heier	Alaska
Dave Jones	California
Marguerite Salazar	Colorado
Stephen C. Taylor	District of Columbia
Ralph T. Hudgens	Georgia
Gordon I. Ito	Hawaii
Jennifer Hammer	Illinois
Stephen W. Robertson	Indiana
Ken Selzer	Kansas
Nancy G. Atkins	Kentucky
James J. Donelon	Louisiana
Al Redmer Jr.	Maryland
Patrick M. McPharlin	Michigan
Mike Rothman	Minnesota
Chlora Lindley-Myers	Missouri
Bruce R. Range	Nebraska
Barbara D. Richardson	Nevada
John G. Franchini	New Mexico
Jillian Froment	Ohio
John D. Doak	Oklahoma
Kent Sullivan	Texas
Todd E. Kiser	Utah
Michael S. Pieciak	Vermont
Jacqueline K. Cunningham	Virginia
Mike Kreidler	Washington

NAIC Support Staff: Jennifer Gardner/Aaron Brandenburg

PROPERTY AND CASUALTY INSURANCE (C) COMMITTEE

(Continued)

Title Insurance Consumer Shopping Tools (C) Working Group

of the Title Insurance (C) Task Force

Warren Byrd, Chair	Louisiana
Neil Derr/Jon Lockhart	Colorado
Jonathan Handsborough	Indiana
Heather Droge	Kansas
Darlene Arnold	Maryland
Angela Nelson	Missouri
Otis Phillips	New Mexico
Michelle Rafeld	Ohio
Marianne Baker/James Kennedy	Texas
Brett J. Barratt/Angie Watson	Utah

NAIC Support Staff: Jennifer Gardner/Aaron Brandenburg

Title Affiliated Business Process Review (C) Working Group

of the Title Insurance (C) Task Force

Jill Jacobi, Chair	California
Neil Derr	Colorado
Warren Byrd	Louisiana
Robert Lutton	Michigan
Paul Hanson	Minnesota
Suzette Green-Wright	Utah
Jeff Baughman	Washington

NAIC Support Staff: Aaron Brandenburg/Dave Keleher/Jennifer Gardner

Title Insurance Financial Reporting (C) Working Group

of the Title Insurance (C) Task Force

Gordon Hay/Justin C. Schrader, Chair	Nebraska
Teresa Wong/Ron Dahlquist	California
Neil Derr/Jon Lockhart	Colorado
Otis Phillips	New Mexico
Jennifer Wu	Texas

NAIC Support Staff: Aaron Brandenburg/Dave Keleher/Jennifer Gardner

PROPERTY AND CASUALTY INSURANCE (C) COMMITTEE

(Continued)

WORKERS' COMPENSATION (C) TASK FORCE

Lori K. Wing-Heier, Chair	Alaska
Allen W. Kerr, Vice Chair	Arkansas
Jim L. Ridling	Alabama
Leslie R. Hess	Arizona
Dave Jones	California
Katharine L. Wade	Connecticut
Trinidad Navarro	Delaware
Stephen C. Taylor	District of Columbia
David Altmaier	Florida
Ralph T. Hudgens	Georgia
Gordon I. Ito	Hawaii
Dean L. Cameron	Idaho
Jennifer Hammer	Illinois
Ken Selzer	Kansas
Nancy G. Atkins	Kentucky
James J. Donelon	Louisiana
Eric A. Cioppa	Maine
Mike Rothman	Minnesota
Chlora Lindley-Myers	Missouri
Matthew Rosendale	Montana
Barbara D. Richardson	Nevada
Roger A. Sevigny	New Hampshire
John G. Franchini	New Mexico
Mark O. Rabauliman	Northern Mariana Islands
John D. Doak	Oklahoma
Jessica Altman	Pennsylvania
Elizabeth Kelleher Dwyer	Rhode Island
Larry Deiter	South Dakota
Julie Mix McPeak	Tennessee
Todd E. Kiser	Utah
Allan L. McVey	West Virginia
Ted Nickel	Wisconsin

NAIC Support Staff: David Keleher/Aaron Brandenburg

PROPERTY AND CASUALTY INSURANCE (C) COMMITTEE

(Continued)

NAIC/IAIABC Joint (C) Working Group

Eric A. Cioppa, Chair	Maine
Allen W. Kerr/William Lacy	Arkansas
Ron Dahlquist	California
George Bradner	Connecticut
David Altmaier	Florida
Brett Gerger	Illinois
Heather Droge	Kansas
Robin Coombs	Kentucky
Walter Horn	Massachusetts
Tammy Lohmann	Minnesota
Angela Nelson	Missouri
Gennady Stolyarov	Nevada
Robert Doucette	New Mexico
Cuc Nguyen/Frank Stone/Gordon Amini	Oklahoma
Paula Pallozzi	Rhode Island
Tracy L. Klausmeier	Utah
Michael S. Pieciak/Kevin Gaffney	Vermont

NAIC Support Staff: David Keleher

MARKET REGULATION AND CONSUMER AFFAIRS (D) COMMITTEE

Stephen W. Robertson, Chair	Indiana
Allen W. Kerr, Vice Chair	Arkansas
Jean Straight, Vice Chair	Oregon
Lori K. Wing-Heier	Alaska
Dave Jones	California
Marguerite Salazar	Colorado
Trinidad Navarro	Delaware
Mike Rothman	Minnesota
Mike Chaney	Mississippi
Barbara D. Richardson	Nevada
Roger A. Sevigny	New Hampshire
Mike Causey	North Carolina
Jon Godfread	North Dakota
Elizabeth Kelleher Dwyer	Rhode Island
Mike Kreidler	Washington

NAIC Support Staff: Timothy B. Mullen

Market Actions (D) Working Group

of the Market Regulation and Consumer Affairs (D) Committee

Stephen W. Robertson, Chair	Indiana
Allen Kerr, Vice Chair	Arkansas
Pam O'Connell	California
Jack Engle	Illinois
Doug Ommen	Iowa
Stacy Rinehart	Kansas
Eric A. Cioppa	Maine
Paul Hanson	Minnesota
Jim Mealer	Missouri
Bruce R. Ramge	Nebraska
Mark McLeod	New York
Tracy Biehn	North Carolina
Angie Dingus	Ohio
Christopher Monahan	Pennsylvania
Ignatius Wheeler	Texas
Suzette Green-Wright	Utah
Jeanette Plitt	Washington
Mark Hooker	West Virginia

NAIC Support Staff: Paul Santillanes/Randy Helder

MARKET REGULATION AND CONSUMER AFFAIRS (D) COMMITTEE
(Continued)

Market Analysis Procedures (D) Working Group
of the Market Regulation and Consumer Affairs (D) Committee

John Haworth, Chair	Washington
Mark Hooker, Vice Chair	West Virginia
Maria Ailor	Arizona
Melissa Grisham	Arkansas
Don McKinley	California
Damion Hughes	Colorado
Steve DeAngelis/Mark Duffy	Connecticut
Frank Pyle	Delaware
Lee Backus	District of Columbia
Amy Groszos	Florida
Jack Engle/Michael Rohan	Illinois
Tate Flott	Kansas
Russ Hamblen	Kentucky
Jeff Zewe	Louisiana
Tim Schott	Maine
Nour Benchaaboun	Maryland
Rich Bradley/Mary Lou Moran	Massachusetts
Sherry J. Bass-Pohl	Michigan
Paul Hanson	Minnesota
Jim Mealer	Missouri
Jeannie Keller	Montana
Bruce R. Ramage	Nebraska
Peggy Willard-Ross	Nevada
Edwin Pugsley	New Hampshire
Clifton Day	New Jersey
Mark W. Jordan	New Mexico
Stephen Doody/Larry Wertel	New York
Angela Dingus	Ohio
Joel Sander	Oklahoma
Jeffrey Arnold	Pennsylvania
Michael Bailes	South Carolina
Suzette Green-Wright	Utah
Kevin Gafney	Vermont
Will Felvey	Virginia
Rebecca Rebholz	Wisconsin

NAIC Support Staff: Teresa Cooper/Randy Helder

MARKET REGULATION AND CONSUMER AFFAIRS (D) COMMITTEE

(Continued)

Market Conduct Examination Standards (D) Working Group

of the Market Regulation and Consumer Affairs (D) Committee

Bruce R. Range, Chair	Nebraska
Jim Mealer, Vice Chair	Missouri
Damion Hughes	Colorado
Kurt Swan	Connecticut
Lee Backus/Sharon Shipp	District of Columbia
Mark Ossi/Debra Peirce	Georgia
Doug Ommen	Iowa
Russell Hamblen	Kentucky
Rich Bradley	Massachusetts
Paul Hanson	Minnesota
Peggy Willard-Ross	Nevada
Win Pugsley	New Hampshire
Cliff Day	New Jersey
Robert McLaughlin	New York
Angela Dingus	Ohio
Joel Sander	Oklahoma
Constance Arnold	Pennsylvania
Christina Rouleau	Vermont
Julie Fairbanks	Virginia
Jeanette Plitt	Washington
Mark Hooker	West Virginia
Rebecca Rebholz	Wisconsin

NAIC Support Staff: Petra Wallace/Lois E. Alexander

Market Conduct Annual Statement Blanks (D) Working Group

of the Market Regulation and Consumer Affairs (D) Committee

Maria Ailor, Chair	Arizona
Angela Dingus, Vice Chair	Ohio
Kurt Swan	Connecticut
Amy Groszos	Florida
Michael P. Rohan/Jack Engle	Illinois
Lori Cunningham	Kentucky
Paul Hanson	Minnesota
Jim Mealer/Brent Kabler	Missouri
Michael Bailes	South Carolina
Lisa Borchert/Ned Gaines/John Haworth	Washington
Mark Hooker	West Virginia
Jo LeDuc	Wisconsin

NAIC Support Staff: Tressa Smith/Teresa Cooper

MARKET REGULATION AND CONSUMER AFFAIRS (D) COMMITTEE

(Continued)

Market Regulation Certification (D) Working Group

of the Market Regulation and Consumer Affairs (D) Committee

Stephen W. Robertson, Chair	Indiana
TBD, Vice Chair	
Lori K. Wing-Heier	Alaska
Allen W. Kerr	Arkansas
Michael P. Rohan/Jack Engle	Illinois
Doug Ommen	Iowa
Al Redmer Jr.	Maryland
Gary Anderson	Massachusetts
Mike Rothman	Minnesota
Chlora Lindley-Myers	Missouri
Bruce R. Ramage	Nebraska
Roger A. Sevigny	New Hampshire
Peter Hartt	New Jersey
John G. Franchini	New Mexico
Jillian Froment	Ohio
John D. Doak	Oklahoma
Jean Straight	Oregon
Jessica Altman	Pennsylvania
Raymond G. Farmer	South Carolina
Todd E. Kiser	Utah
Michael Pieciak	Vermont
Jaqueline K. Cunningham	Virginia
Mike Kreidler	Washington
Allan L. McVey	West Virginia
Tom Glause	Wyoming

NAIC Support Staff: Randy Helder/ Timothy B. Mullen

Pre-Dispute Mandatory Arbitration Clauses (D) Working Group

of the Market Regulation and Consumer Affairs (D) Committee

Susan Stapp, Co-Chair	California
TK Keen, Co-Chair	Oregon
Kurt Swan	Connecticut
Anoush Brangaccio	Florida
Kathleen Nakasone	Hawaii
Arlene Knighten	Louisiana
Rich Bradley	Massachusetts
Robert Doucette	New Mexico
Christopher Mulvihill/Bruce Wells	New York
Amanda Baird	Ohio
Kara Mace/David Muckerheide	Texas
Jeff Rude	Wyoming

NAIC Support Staff: Timothy B. Mullen/Randy Helder

MARKET REGULATION AND CONSUMER AFFAIRS (D) COMMITTEE

(Continued)

Privacy Disclosures (D) Working Group

of the Market Regulation and Consumer Affairs (D) Committee

Mike Kreidler, Chair	Washington
Peg Brown, Vice Chair	Colorado
Lucy Jabourian	California
Kurt Swan	Connecticut
Eric A. Cioppa	Maine
Catherine Grason	Maryland
Alicia Furbush	Massachusetts
Jim Mealer	Missouri
Jana Jarrett	Ohio
Michael Rhoads	Oklahoma
Chris Monahan	Pennsylvania
Christina Rouleau	Vermont
Don Beatty	Virginia
Mark Hooker	West Virginia

NAIC Support Staff: Lois E. Alexander /Timothy B. Mullen

Public Adjuster (C/D) Working Group

of the Market Regulation and Consumer Affairs (D) Committee and the Property and Casualty Insurance (C) Committee

Buddy Combs, Chair	Oklahoma
Chris Murray	Alaska
Kim Johnson -Woods	California
Bobbie Baca/Michael Conway	Colorado
David Murphy /Brett Gerger	Illinois
Peter Bratsch	Minnesota
Wanda Magers	Mississippi
Carrie Couch	Missouri
Jeannie Keller	Montana
Barbara Richardson	Nevada
John G. Franchini	New Mexico
Tynesia A. Dorsey	Ohio
Gordon Amini/Courtney Phipps	Oklahoma
Rachel Chester	Rhode Island
Christina R. Rouleau	Vermont
Jeff Baughman	Washington

NAIC Support Staff: Timothy B. Mullen/Aaron Brandenburg

MARKET REGULATION AND CONSUMER AFFAIRS (D) COMMITTEE

(Continued)

ANTIFRAUD (D) TASK FORCE

John D. Doak, Chair	Oklahoma
Jillian Froment, Vice Chair	Ohio
Lori K. Wing-Heier	Alaska
Allen W. Kerr	Arkansas
Dave Jones	California
Katharine L. Wade	Connecticut
Trinidad Navarro	Delaware
Stephen C. Taylor	District of Columbia
Ralph T. Hudgens	Georgia
Dean L. Cameron	Idaho
Doug Ommen	Iowa
Ken Selzer	Kansas
James J. Donelon	Louisiana
Al Redmer Jr.	Maryland
Patrick M. McPharlin	Michigan
Mike Rothman	Minnesota
Mike Chaney	Mississippi
Chlora Lindley-Myers	Missouri
Bruce R. Range	Nebraska
Barbara D. Richardson	Nevada
Roger A. Sevigny	New Hampshire
John G. Franchini	New Mexico
Maria T. Vullo	New York
Mark O. Rabauliman	Northern Mariana Islands
Larry Deiter	South Dakota
Kent Sullivan	Texas
Todd E. Kiser	Utah
Jacqueline K. Cunningham	Virginia
Mike Kreidler	Washington
Allan L. McVey	West Virginia

NAIC Support Staff: Greg Welker/Lois E. Alexander

MARKET REGULATION AND CONSUMER AFFAIRS (D) COMMITTEE

(Continued)

Antifraud Technology (D) Working Group

of the Antifraud (D) Task Force

Armand Glick, Chair	Utah
George Mueller	California
Simon Blank	Florida
Matt Stewart	Louisiana
Roberta Baca	New Mexico
Shane Guyant	North Carolina
Michelle Rafeld	Ohio
Mike Beavers	Virginia

NAIC Support Staff: Greg Welker

Antifraud Education Enhancement (D) Working Group

of the Antifraud (D) Task Force

Michelle Rafeld, Chair	Ohio
Alex Romero	Alaska
Simon Blank	Florida
Matt Stewart	Louisiana
Armand Glick	Utah

NAIC Support Staff: Greg Welker

MARKET REGULATION AND CONSUMER AFFAIRS (D) COMMITTEE

(Continued)

MARKET INFORMATION SYSTEMS (D) TASK FORCE

Mike Kreidler, Chair	Washington
Lori K. Wing-Heier, Vice Chair	Alaska
Allen W. Kerr	Arkansas
Dave Jones	California
Marguerite Salazar	Colorado
Trinidad Navarro	Delaware
Stephen C. Taylor	District of Columbia
Jennifer Hammer	Illinois
Ken Selzer	Kansas
Nancy G. Atkins	Kentucky
James J. Donelon	Louisiana
Mike Rothman	Minnesota
Chlora Lindley-Myers	Missouri
Roger A. Sevigny	New Hampshire
Richard J. Badolato	New Jersey
Jon Godfread	North Dakota
Jillian Froment	Ohio
John D. Doak	Oklahoma
Kent Sullivan	Texas
Todd E. Kiser	Utah
Allan L. McVey	West Virginia

NAIC Support Staff: Randy Helder

MARKET REGULATION AND CONSUMER AFFAIRS (D) COMMITTEE

(Continued)

PRODUCER LICENSING (D) TASK FORCE

Elizabeth Kelleher Dwyer, Chair	Rhode Island
Larry Deiter, Vice Chair	South Dakota
Lori K. Wing-Heier	Alaska
Allen W. Kerr	Arkansas
Dave Jones	California
Marguerite Salazar	Colorado
David Altmaier	Florida
Gordon I. Ito	Hawaii
Dean L. Cameron	Idaho
Jennifer Hammer	Illinois
Ken Selzer	Kansas
Nancy G. Atkins	Kentucky
James J. Donelon	Louisiana
Al Redmer Jr.	Maryland
Gary Anderson	Massachusetts
Patrick M. McPharlin	Michigan
Mike Rothman	Minnesota
Mike Chaney	Mississippi
Chlora Lindley-Myers	Missouri
Bruce R. Ramge	Nebraska
Barbara D. Richardson	Nevada
Roger A. Sevigny	New Hampshire
Maria T. Vullo	New York
Mike Causey	North Carolina
Jon Godfread	North Dakota
Jillian Froment	Ohio
Javier Rivera Rios	Puerto Rico
Julie Mix McPeak	Tennessee
Kent Sullivan	Texas
Todd E. Kiser	Utah
Michael S. Pieciak	Vermont
Osbert E. Potter	Virgin Islands
Jacqueline K. Cunningham	Virginia
Mike Kreidler	Washington
Allan L. McVey	West Virginia
Ted Nickel	Wisconsin

NAIC Support Staff: Timothy B. Mullen/Greg Welker

MARKET REGULATION AND CONSUMER AFFAIRS (D) COMMITTEE

(Continued)

Independent Adjuster Licensing (D) Working Group

of the Producer Licensing (D) Task Force

Jeff Baughman, Chair	Washington
Courtney Khodabakhsh, Vice Chair	Oklahoma
Jimmy Gunn	Alabama
Chris Murray	Alaska
Keith Kuzmich	California
Matthew Guy	Florida
Lisa Tordjman	Idaho
Lorie Gasior	Louisiana
Michele Riddering	Michigan
Wanda Magers	Mississippi
Jeannie Keller	Montana
Kelvin Zimmer	North Dakota
Rachel Chester	Rhode Island
Mike Carnley	Texas
Randy Overstreet	Utah

NAIC Support Staff: Greg Welker

Uniform Education (D) Working Group

of the Producer Licensing (D) Task Force

Michele Riddering, Chair	Michigan
Kelvin Zimmer, Vice Chair	North Dakota
Chris Murray	Alaska
Keith Kuzmich	California
Matthew Guy	Florida
Wanda Magers	Mississippi
Otis Phillips	New Mexico
Tynesia Dorsey/Karen Vourvopoulos	Ohio
Rachel Chester	Rhode Island

NAIC Support Staff: Greg Welker

MARKET REGULATION AND CONSUMER AFFAIRS (D) COMMITTEE

(Continued)

Uniform Licensing (D) Working Group

of the Producer Licensing (D) Task Force

Keith Kuzmich, Chair	California
Chris Murray	Alaska
Matthew Guy	Florida
Michele Riddering	Michigan
Kevin Schlautman	Nebraska
Joy Miller	Nevada
Otis Phillips	New Mexico
Kelvin Zimmer	North Dakota
Tynesia Dorsey/Karen Vourvopoulos	Ohio
Wilma Orozco Fanfán	Puerto Rico
Rachel Chester	Rhode Island
Dan Nelson	South Dakota
Mike Beavers	Virginia
Jeff Baughman	Washington

NAIC Support Staff: Greg Welker

FINANCIAL CONDITION (E) COMMITTEE

Eric A. Cioppa, Chair	Maine
Ken Selzer, Vice Chair	Kansas
Dave Jones	California
Artemio B. Ilagan	Guam
Nancy G. Atkins	Kentucky
Chlora Lindley-Myers	Missouri
Matthew Rosendale	Montana
Barbara D. Richardson	Nevada
Richard J. Badolato	New Jersey
Jillian Froment	Ohio
Kent Sullivan	Texas
Michael S. Pieciak	Vermont
Jacqueline K. Cunningham	Virginia
Allan L. McVey	West Virginia
Tom Glause	Wyoming

NAIC Support Staff: Dan Daveline/Julie Gann/Bruce Jenson

FINANCIAL CONDITION (E) COMMITTEE

(Continued)

Financial Analysis (E) Working Group

of the Financial Condition (E) Committee

Doug Slape, Chair	Texas
Kevin Fry, Vice-Chair	Illinois
TBD	California
Kathryn Belfi	Connecticut
Dave Lonchar	Delaware
Carolyn Morgan/Virginia Christy	Florida
Jim Armstrong	Iowa
John Turchi	Massachusetts
Judy Weaver	Michigan
Leslie Nehring	Missouri
Justin Schrader	Nebraska
John Sirovetz	New Jersey
Mark McLeod/Marc Allen	New York
Lori Gorman	North Carolina
Dale Bruggeman	Ohio
Joe DiMemmo	Pennsylvania
Ed Buyalos	Virginia
Amy Malm	Wisconsin

NAIC Support Staff: Andy Daleo/Jane Koenigsman

Group Capital Calculation (E) Working Group

of the Financial Condition (E) Committee

David Altmaier, Chair	Florida
Ron Dahlquist/Susan Bernard	California
Kathy Belfi	Connecticut
Philip Barlow	District of Columbia
Kevin Fry	Illinois
Gary Anderson	Massachusetts
Leslie Nehring	Missouri
Justin Schrader	Nebraska
Peter L. Hartt	New Jersey
Joan Riddell/ Selrey David	New York
Jackie Obusek	North Carolina
Dale Bruggeman	Ohio
Mike Boerner/Doug Slape	Texas
Doug Stolte/David Smith	Virginia

NAIC Support Staff: Julie L. Garber

FINANCIAL CONDITION (E) COMMITTEE

(Continued)

Group Solvency Issues (E) Working Group

of the Financial Condition (E) Committee

Justin Schrader, Chair	Nebraska
Doug Slape, Vice Chair	Texas
Emma Hirschhorn	California
Kathy Belfi	Connecticut
Charles Santana	Delaware
David Altmaier	Florida
Kevin Fry / Eric Moser	Illinois
Roy Eft	Indiana
Jim Armstrong	Iowa
John Turchi	Massachusetts
Judy Weaver	Michigan
Leslie Nehring	Missouri
Steve Kerner / Kristine Maurer	New Jersey
Margot Small	New York
Dale Bruggeman / Tim Biler	Ohio
Joe DiMemmo	Pennsylvania
Doug Stolte	Virginia
Steve Junior	Wisconsin

NAIC Support Staff: Bruce Jenson/Jane Koenigsman

ORSA Implementation (E) Subgroup

of the Group Solvency Issues (E) Working Group

Kathy Belfi, Co-Chair	Connecticut
Mike Yanacheak, Co-Chair	Iowa
Susan Bernard/Ron Dahlquist	California
Robert Ridenour	Florida
Kevin Fry / Eric Moser	Illinois
Leslie Nehring/Julie Lederer	Missouri
Justin Schrader/Rhonda Ahrens	Nebraska
Patricia Gosselin and Doug Bartlett	New Hampshire
Jim Matheson/Edward Kiffel	New York
Dave Cook/Jeff Lehr	Ohio
Mike Arendall	Texas
Amy Malm	Wisconsin

NAIC Support Staff: Bruce Jenson

FINANCIAL CONDITION (E) COMMITTEE

(Continued)

Health Reform Solvency Impact (E) Subgroup

of the Financial Condition (E) Committee

Stephen Wiest, Chair	New York
William Arfanis	Connecticut
Carolyn Morgan	Florida
Roy Eft	Indiana
Klete Geren	Iowa
Vanessa Leon	Maine
Mary Pesce	New Jersey
Tim Biler / Nancy Hubler	Ohio
Richard Hinkel	Wisconsin

NAIC Support Staff: Kristi Montanelli/Mary Caswell

Mortgage Guaranty Insurance (E) Working Group

of the Financial Condition (E) Committee

Ted Nickel, Chair	Wisconsin
Kurt Regner	Arizona
Monica Macaluso	California
Robert Ballard	Florida
John Rehagen	Missouri
Margot Small	New York
Jackie Obusek	North Carolina
Joe DiMemmo	Pennsylvania
Doug Slape	Texas

NAIC Support Staff: Andy Daleo

NAIC/AICPA (E) Working Group

of the Financial Condition (E) Committee

Doug Stolte, Chair	Virginia
Jim Armstrong, Vice-Chair	Iowa
Laura Clements / Susan Bernard	California
Rylynn Brown	Delaware
Judy Weaver	Michigan
Leslie Nehring	Missouri
Justin Schrader	Nebraska
Doug Bartlett	New Hampshire
Dale Bruggeman	Ohio
Ryan Keeling	Oregon
Joe DiMemmo	Pennsylvania
Johanna Nickelson	South Dakota
Jake Garn	Utah

NAIC Support Staff: Bruce Jenson

FINANCIAL CONDITION (E) COMMITTEE

(Continued)

National Treatment and Coordination (E) Working Group

Jill Jacobi, Co-Chair	California
Jeff Hunt, Co-Chair	Texas
Cindy Hathaway	Colorado
Kathy Belfi	Connecticut
Alisa Pritchard	Delaware
Mary Mostoller	Florida
Stewart Guerin	Louisiana
Debbie Doggett	Missouri
Victoria Baca	New Mexico
Matt Fischer	North Dakota
Cameron Piatt	Ohio
Joel Sander	Oklahoma
Greg Lathrop	Oregon
Cressinda Bybee	Pennsylvania
Eric Showgren/Jay Sueoka	Utah
Ron Pastuch	Washington
Kristin Forsberg	Wisconsin
Linda Johnson	Wyoming

NAIC Support Staff: Jane Barr

Biographical Third-Party Review (E) Subgroup

of the National Treatment and Coordination (E) Working Group

Cameron Piatt, Chair	Ohio
Mary Mostoller	Florida
Amy Stuart	Illinois
Kathy Lamb	Nevada
Eric Showgren/Jay Sueoka	Utah
Ron Pastuch	Washington

NAIC Support Staff: Jane Barr/Crystal Brown

Company Licensing Transactions (E) Subgroup

of the National Treatment and Coordination (E) Working Group

Jill Jacobi, Chair	California
Maxine Froemling	Alaska
Kathy Belfi	Connecticut
Dave Lonchar	Delaware
Mary Mostoller	Florida
Debbie Doggett	Missouri
Joel Sander	Oklahoma
Cressinda Bybee	Pennsylvania
Jeff Hunt	Texas
Ron Pastuch	Washington

NAIC Support Staff: Crystal Brown/Jane Barr

FINANCIAL CONDITION (E) COMMITTEE

(Continued)

Risk-Focused Surveillance (E) Working Group

Leslie Nehring, Co-Chair	Missouri
Justin Schrader, Co-Chair	Nebraska
Richard Ford	Alabama
Susan Bernard	California
William Arfanis / Kathy Belfi	Connecticut
Carolyn Morgan/Robert Ridenour	Florida
Cindy Andersen / Eric Moser	Illinois
Roy Eft	Indiana
Jim Armstrong / Daniel Mathis	Iowa
Stewart Guerin	Louisiana
Vanessa Leon	Maine
TBD	Maryland
Judy Weaver	Michigan
Patricia Gosselin	New Hampshire
Steve Kerner	New Jersey
Mark McLeod	New York
Tony Riddick/Jackie Obusek	North Carolina
Dwight Radel / Tracy Snow	Ohio
Eli Snowbarger	Oklahoma
Ryan Keeling	Oregon
Joe DiMemmo	Pennsylvania
Jack Broccoli	Rhode Island
Teresa Saldana	Texas
Jake Garn	Utah
Dan Petterson	Vermont
David Smith	Virginia
Patrick McNaughton	Washington
Amy Malm	Wisconsin

NAIC Support Staff: Bruce Jenson/Jane Koenigsman

Risk-Limiting Contracts (E) Working Group

Kevin Fry, Chair	Illinois
Karen Adams	Arizona
Susan Gozzo Andrews	Connecticut
Robert Ridenour	Florida
Mark Ossi	Georgia
Leslie Nehring	Missouri
Tom Botsko/Dale Bruggeman	Ohio
David Dahl	Oregon
Will Davis	South Carolina
Doug Slape	Texas

NAIC Support Staff: Robin Marcotte

FINANCIAL CONDITION (E) COMMITTEE

(Continued)

Variable Annuities Issues (E) Working Group

Jim Armstrong, Chair	Iowa
Kim Hudson	California
Michael Colburn	Connecticut
Judy Weaver	Michigan
Fred Andersen	Minnesota
John Rehagen	Missouri
Justin Schrader	Nebraska
Kristine Maurer/David Wolf	New Jersey
William Carmello	New York
Peter Weber	Ohio

NAIC Support Staff: Dan Daveline

Valuation Analysis (E) Working Group

Mike Boerner, Chair	Texas
Fred Andersen, Vice-Chair	Minnesota
Perry Kupferman	California
James Jakielo	Connecticut
Lisa Parker	Florida
Bruce Sartain	Illinois
Mike Yanacheak	Iowa
Judy Weaver	Michigan
John Rehagen	Missouri
Rhonda Ahrens	Nebraska
William Carmello	New York
Peter Weber	Ohio
Tomasz Serbinowski	Utah
Doug Stolte	Virginia
Randy Milquet	Wisconsin

NAIC Support Staff: Larry Bruning

FINANCIAL CONDITION (E) COMMITTEE

(Continued)

ACCOUNTING PRACTICES AND PROCEDURES (E) TASK FORCE

Dave Jones, Chair	California
Kent Sullivan, Vice Chair	Texas
Jim L. Ridling	Alabama
Lori K. Wing-Heier	Alaska
Allen W. Kerr	Arkansas
Katharine L. Wade	Connecticut
Trinidad Navarro	Delaware
Stephen C. Taylor	District of Columbia
David Altmaier	Florida
Artemio B. Ilagan	Guam
Gordon I. Ito	Hawaii
Jennifer Hammer	Illinois
Stephen W. Robertson	Indiana
Doug Ommen	Iowa
Ken Selzer	Kansas
Nancy G. Atkins	Kentucky
James J. Donelon	Louisiana
Eric A. Cioppa	Maine
Gary Anderson	Massachusetts
Patrick M. McPharlin	Michigan
Mike Rothman	Minnesota
Mike Chaney	Mississippi
Chlora Lindley-Myers	Missouri
Bruce R. Ramge	Nebraska
Barbara D. Richardson	Nevada
Roger A. Sevigny	New Hampshire
Richard J. Badolato	New Jersey
Maria T. Vullo	New York
Mike Causey	North Carolina
Jon Godfread	North Dakota
Mark O. Rabauliman	Northern Mariana Islands
Jillian Froment	Ohio
John D. Doak	Oklahoma
Jessica Altman	Pennsylvania
Elizabeth Kelleher Dwyer	Rhode Island
Larry Deiter	South Dakota
Julie Mix McPeak	Tennessee
Todd E. Kiser	Utah
Michael S. Pieciak	Vermont
Jacqueline K. Cunningham	Virginia
Mike Kreidler	Washington
Allan L. McVey	West Virginia
Ted Nickel	Wisconsin
Tom Glause	Wyoming

NAIC Support Staff: Robin Marcotte

FINANCIAL CONDITION (E) COMMITTEE

(Continued)

Blanks (E) Working Group

of the Accounting Practices and Procedures (E) Task Force

Jake Garn, Chair	Utah
Kim Hudson, Vice Chair	California
Richard Ford	Alabama
Maxine Froemling	Alaska
William Arfanis	Connecticut
Dave Lonchar	Delaware
N. Kevin Brown	District of Columbia
Carolyn Morgan	Florida
Roy Eft	Indiana
Daniel Mathis	Iowa
Dan Schaefer	Michigan
Debbie Doggett	Missouri
Lindsay Crawford/Justin Schrader	Nebraska
Patricia Gosselin	New Hampshire
Steve Kerner	New Jersey
Tracy Snow	Ohio
Joel Sander	Oklahoma
Ryan Keeling	Oregon
Joe DiMemmo	Pennsylvania
Mark Jaquish	Tennessee
Shawn Frederick	Texas
Karen Murphy	Vermont
Steven Drutz	Washington
Jamie Taylor	West Virginia
Elena Vetrina	Wisconsin

NAIC Support Staff: Mary Caswell/Calvin Ferguson/Julie Gann

Investment Reporting (E) Subgroup

of the Blanks (E) Working Group

Jamie Walker, Chair	Texas
Kevin Fry	Illinois
Roy Eft	Indiana
Steve Mayhew	Michigan
Justin Schrader/Bruce Bornman	Nebraska
Jim Everett	New York
Joel Sander	Oklahoma
Jake Garn	Utah

NAIC Support Staff: Jill Youtsey/Mary Caswell

FINANCIAL CONDITION (E) COMMITTEE

(Continued)

Statutory Accounting Principles (E) Working Group

of the Accounting Practices and Procedures (E) Task Force

Dale Bruggeman, Chair	Ohio
Jim Armstrong, Vice Chair	Iowa
Richard Ford	Alabama
Kim Hudson	California
Kathy Belfi	Connecticut
Dave Lonchar	Delaware
Eric Moser	Illinois
Caroline Brock/Stewart Guerin	Louisiana
Judy Weaver	Michigan
Doug Bartlett	New Hampshire
Stephen Wiest	New York
Joe DiMemmo	Pennsylvania
Doug Slape/Jamie Walker	Texas
Doug Stolte/David Smith	Virginia
Elena Vetrina	Wisconsin

NAIC Support Staff: Robin Marcotte/Julie Gann

Restricted Asset (E) Subgroup

of the Statutory Accounting Principles (E) Working Group

Vacant, Chair	
Richard Ford	Alabama
Jim Armstrong	Iowa
Caroline Brock/Stewart Guerin	Louisiana
Judy Weaver	Michigan
Jim Everett	New York
Dale Bruggeman	Ohio
Doug Slape/Jamie Walker	Texas
Elena Vetrina	Wisconsin

NAIC Support Staff: Julie Gann

FINANCIAL CONDITION (E) COMMITTEE

(Continued)

CAPITAL ADEQUACY (E) TASK FORCE

David Altmaier, Chair	Florida
Todd E. Kiser, Vice Chair	Utah
Lori K. Wing-Heier	Alaska
Dave Jones	California
Katharine L. Wade	Connecticut
Trinidad Navarro	Delaware
Stephen C. Taylor	District of Columbia
Gordon I. Ito	Hawaii
Jennifer Hammer	Illinois
Doug Ommen	Iowa
Ken Selzer	Kansas
Mike Rothman	Minnesota
Chlora Lindley-Myers	Missouri
Matthew Rosendale	Montana
Richard J. Badolato	New Jersey
John G. Franchini	New Mexico
Maria T. Vullo	New York
Jillian Froment	Ohio
John D. Doak	Oklahoma
Elizabeth Kelleher Dwyer	Rhode Island
Kent Sullivan	Texas
Mike Kreidler	Washington
Allan L. McVey	West Virginia
Ted Nickel	Wisconsin

NAIC Support Staff: Jane Barr/Lou Felice

Health Risk-Based Capital (E) Working Group

of the Capital Adequacy (E) Task Force

Patrick McNaughton, Chair	Washington
Richard Hinkel, Vice-Chair	Wisconsin
Steve Ostlund	Alabama
Michael Muldoon	Colorado
Carolyn Morgan / Lisa Parker	Florida
Tish Becker	Kansas
Kristi Bohn	Minnesota
Annette James	Nevada
Stephen Wiest	New York
Kim Rankin	Pennsylvania
Mike Boerner / Aaron Hodges	Texas

NAIC Support Staff: Crystal Brown/Eva Yeung

FINANCIAL CONDITION (E) COMMITTEE

(Continued)

Investment Risk-Based Capital (E) Working Group

of the Capital Adequacy (E) Task Force

Kevin Fry, Chair	Illinois
Philip Barlow, Vice Chair	District of Columbia
Greg Lieber	California
Kathy Belfi	Connecticut
Shawn Steinly	Florida
Tish Becker	Kansas
Anna Taam	New York
Steven Drutz	Washington
Richard Hinkel	Wisconsin

NAIC Support Staff: Julie L. Garber

Life Risk-Based Capital (E) Working Group

of the Capital Adequacy (E) Task Force

Philip Barlow, Chair	District of Columbia
Lisa Parker, Vice Chair	Florida
Steve Ostlund	Alabama
Perry Kupferman	California
Deborah Batista	Colorado
Wanchin Chou	Connecticut
Tish Becker	Kansas
Fred Andersen	Minnesota
William Leung	Missouri
Rhonda Ahrens	Nebraska
Gary Weiss	New Jersey
William Carmello	New York
Frank Stone	Oklahoma
Mike Boerner	Texas

NAIC Support Staff: Dave Fleming/Eva Yeung

FINANCIAL CONDITION (E) COMMITTEE

(Continued)

C-3 Phase II/AG 43 (E/A) Subgroup

of the of the Life Risk-Based Capital (E) Working Group and Life Actuarial (A) Task Force

Peter Weber, Chair	Ohio
Philip Barlow	District of Columbia
Tish Becker	Kansas
Frederick Andersen	Minnesota
William Leung	Missouri
William Carmello	New York
Mike Boerner	Texas

NAIC Support Staff: Dave Fleming/Eva Yeung

Joint Longevity Risk (A/E) Subgroup

of the Life Actuarial (A) Task Force and Life Risk-Based Capital (E) Working Group

Rhonda Ahrens , Chair	Nebraska
Mike Yanacheak	Iowa
John Robinson	Minnesota
William Carmello	New York
Peter Weber	Ohio

NAIC Support Staff: Dave Fleming

FINANCIAL CONDITION (E) COMMITTEE

(Continued)

Stress Testing (E) Subgroup

of the Life Risk-Based Capital (E) Working Group

Lisa Parker, Chair	Florida
Perry Kupferman	California
Tish Becker	Kansas
William Leung	Missouri
William Carmello	New York
Mike Boerner	Texas

NAIC Support Staff: Dave Fleming/Eva Yeung

Operational Risk (E) Subgroup

of the Capital Adequacy (E) Task Force

Alan Seeley, Chair	New Mexico
Richard Ford	Alabama
Ron Dahlquist	California
Tish Becker	Kansas
John Robinson	Minnesota
Anna Taam / Stephen Wiest	New York
John D. Doak/Joel Sander	Oklahoma
Steven Drutz / Patrick McNaughton	Washington
Richard Hinkel	Wisconsin

NAIC Support Staff: Lou Felice/Jane Barr

FINANCIAL CONDITION (E) COMMITTEE

(Continued)

Property and Casualty Risk-Based Capital (E) Working Group

of the Capital Adequacy (E) Task Force

Tom Botsko, Chair	Ohio
Richard Ford	Alabama
Ron Dahlquist / Giovanni Muzzarelli	California
Mitchell Bronson	Colorado
Wanchin Chou	Connecticut
Robert Ridenour	Florida
Judy Mottar	Illinois
Alan Seeley	New Mexico
Gloria Huberman/Sak-man Luk	New York
Dale Bruggeman/Tom Botsko	Ohio
Will Davis	South Carolina
Nicole Elliott / Jennifer Wu	Texas
Randy Milquet	Wisconsin

NAIC Support Staff: Eva Yeung/Crystal Brown

Catastrophe Risk (E) Subgroup

of the Property and Casualty Risk-Based Capital (E) Working Group

Ron Dahlquist, Chair	California
Robert Ridenour, Vice Chair	Florida
Giovanni Muzzarelli	California
Mitchell Bronson	Colorado
Wanchin Chou	Connecticut
Judy Mottar	Illinois
Gordon Hay	Nebraska
Alan Seeley	New Mexico
Sak-man Luk	New York
Tom Botsko / Dale Bruggeman	Ohio
John D. Doak / Frank Stone	Oklahoma
Nicole Elliott / Jennifer Wu	Texas

NAIC Support Staff: Eva Yeung/Crystal Brown

FINANCIAL CONDITION (E) COMMITTEE

(Continued)

EXAMINATION OVERSIGHT (E) TASK FORCE

Jillian Froment, Chair	Ohio
Allen W. Kerr, Vice Chair	Arkansas
Jim L. Ridling	Alabama
Lori K. Wing-Heier	Alaska
Dave Jones	California
Marguerite Salazar	Colorado
Katharine L. Wade	Connecticut
Trinidad Navarro	Delaware
Stephen C. Taylor	District of Columbia
Gordon I. Ito	Hawaii
Dean L. Cameron	Idaho
Jennifer Hammer	Illinois
Stephen W. Robertson	Indiana
Doug Ommen	Iowa
Ken Selzer	Kansas
Nancy G. Atkins	Kentucky
James J. Donelon	Louisiana
Gary Anderson	Massachusetts
Patrick M. McPharlin	Michigan
Mike Rothman	Minnesota
Mike Chaney	Mississippi
Chlora Lindley-Myers	Missouri
Bruce R. Ramge	Nebraska
Barbara D. Richardson	Nevada
Roger A. Sevigny	New Hampshire
Richard J. Badolato	New Jersey
Mike Causey	North Carolina
John D. Doak	Oklahoma
Javier Rivera Rios	Puerto Rico
Elizabeth Kelleher Dwyer	Rhode Island
Larry Deiter	South Dakota
Kent Sullivan	Texas
Todd E. Kiser	Utah
Michael S. Pieciak	Vermont
Osbert E. Potter	Virgin Islands
Jacqueline K. Cunningham	Virginia
Mike Kreidler	Washington
Ted Nickel	Wisconsin
Tom Glause	Wyoming

NAIC Support Staff: Miguel Romero

FINANCIAL CONDITION (E) COMMITTEE

(Continued)

Analyst Team System Oversight (E) Working Group

of the Examination Oversight (E) Task Force

Linda Johnson, Chair	Wyoming
Emma Hirschhorn	California
Adrienne Lupo	Delaware
Roy Eft	Indiana
Richard Ramos	Kansas
Sandy Batts	Kentucky
Dave Clayton	Nebraska
Patricia Gosselin	New Hampshire
James Matheson	New York
Joel Sander	Oklahoma
Joe DiMemmo	Pennsylvania
Jack Broccoli	Rhode Island
Levi Olson/Ana Careaga	Wisconsin

NAIC Support Staff: Ralph Villegas/Jane Koenigsman

Electronic Workpaper (E) Working Group

of the Examination Oversight (E) Task Force

Susan Bernard, Chair	California
Richard Ford	Alabama
William Arfanis	Connecticut
Charles Santana	Delaware
Jesse Alonzo	Illinois
Daniel Mathis	Iowa
Craig Rehse	Michigan
Grace Kelly	Minnesota
Eileen Fox	New York
Metty Nyangoro	Ohio
Eli Snowbarger	Oklahoma
Melissa Greiner	Pennsylvania
Ignatius Wheeler	Texas
Patrick McNaughton	Washington
Tom Jefferson	Wisconsin

NAIC Support Staff: Bruce Jenson/James Portuguez

FINANCIAL CONDITION (E) COMMITTEE

(Continued)

Financial Analysis Handbook (E) Working Group

of the Examination Oversight (E) Task Force

Judy Weaver, Chair	Michigan
Sheila Travis	Alabama
Scott Persten/Kurt Regner	Arizona
Emma Hirschhorn	California
Kathy Belfi/Lynn Hein	Connecticut
N. Kevin Brown	District of Columbia
Eric Moser	Illinois
Roy Eft	Indiana
Lynn Beckner	Maryland
Debbie Doggett	Missouri
Patricia Gosselin	New Hampshire
Mary Pesce/John Sirovetz	New Jersey
James Matheson	New York
Dwight Radel/Tim Biler	Ohio
Ryan Keeling	Oregon
Kimberly Rankin	Pennsylvania
Jack Broccoli	Rhode Island
Amy Garcia/Teresa Saldana	Texas
Amy Malm	Wisconsin

NAIC Support Staff: Rodney Good/Bill Rivers/Ralph Villegas

Financial Analysis Research and Development (E) Working Group

of the Examination Oversight (E) Task Force

Judy Weaver, Chair	Michigan
Sheila Travis	Alabama
Emma Hirschhorn	California
Carolyn Morgan/Helen McGhin	Florida
Eric Moser	Illinois
Debbie Doggett	Missouri
Patricia Gosselin	New Hampshire
Mary Pesce/John Sirovetz	New Jersey
James Matheson	New York
Kimberly Rankin	Pennsylvania
Jack Broccoli	Rhode Island
Amy Malm	Wisconsin

NAIC Support Staff: Rodney Good/Bill Rivers/Ralph Villegas

FINANCIAL CONDITION (E) COMMITTEE

(Continued)

Financial Examiners Coordination (E) Working Group

of the Examination Oversight (E) Task Force

Patrick McNaughton, Co-Chair	Washington
Ignatius Wheeler, Co-Chair	Texas
Richard Ford	Alabama
Laura Clements	California
William Arfanis	Connecticut
Roy Eft	Indiana
George Hutschenreuter	Maryland
Robert Lamberjack	Michigan
Kathleen Orth	Minnesota
Leslie Nehring	Missouri
Justin Schrader	Nebraska
Steve Kerner	New Jersey
Tracy Snow/David Cook	Ohio
Joel Sander	Oklahoma
Melissa Greiner	Pennsylvania
Elena Vetrina	Wisconsin

NAIC Support Staff: Bailey Henning

Financial Examiners Handbook (E) Technical Group

of the Examination Oversight (E) Task Force

Susan Bernard, Chair	California
Richard Ford	Alabama
William Arfanis	Connecticut
N. Kevin Brown	District of Columbia
Cindy Andersen	Illinois
Grace Kelly	Minnesota
Levi Nwasoria/Leslie Nehring	Missouri
Justin Schrader	Nebraska
Omar Akel/Renee Hanshaw	Nevada
Colin Wilkins	New Hampshire
Steve Kerner	New Jersey
Tracy Snow	Ohio
Joel Sander	Oklahoma
Melissa Greiner	Pennsylvania
Patrick McNaughton	Washington
John Litweiler	Wisconsin

NAIC Support Staff: Bailey Henning

FINANCIAL CONDITION (E) COMMITTEE

(Continued)

IT Examination (E) Working Group

of the Examination Oversight (E) Task Force

Patrick McNaughton, Chair	Washington
Charles Turner	Alabama
Mel Anderson	Arkansas
Ber Vang	California
Ken Roulier	Connecticut
Ginny Godek	Illinois
Jerry Ehlers	Indiana
Shane Mead	Kansas
George Hutschenreuter	Maryland
Kim Dobbs	Missouri
Justin Schrader	Nebraska
Eileen Fox	New York
Ke Xu	North Carolina
Metty Nyangoro	Ohio
Eli Snowbarger	Oklahoma
Melissa Greiner	Pennsylvania
Dave Jensen	Wisconsin

NAIC Support Staff: Bailey Henning/Miguel Romero

FINANCIAL CONDITION (E) COMMITTEE

(Continued)

LONG TERM CARE INSURANCE (B/E) TASK FORCE

Eric A. Cioppa, Co-Chair	Maine
Al Redmer Jr., Co-Chair	Maryland
Mike Kreidler, Vice Chair	Washington
Dave Jones	California
Marguerite Salazar	Colorado
Katharine L. Wade	Connecticut
David Altmaier	Florida
Dean L. Cameron	Idaho
Mike Rothman	Minnesota
Chloria Lindley-Myers	Missouri
Bruce R. Ramage	Nebraska
John G. Franchini	New Mexico
Jean Straight	Oregon
Jessica Altman	Pennsylvania
Elizabeth Kelleher Dwyer	Rhode Island
Kent Sullivan	Texas
Todd E. Kiser	Utah
Jaqueline K. Cunningham	Virginia

NAIC Support Staff: Dan Daveline/Jolie H. Matthews/Eric King

FINANCIAL CONDITION (E) COMMITTEE

(Continued)

RECEIVERSHIP AND INSOLVENCY (E) TASK FORCE

Richard J. Badolato, Chair	New Jersey
Kent Sullivan, Vice Chair	Texas
Lori K. Wing-Heier	Alaska
Allen W. Kerr	Arkansas
Dave Jones	California
Marguerite Salazar	Colorado
Katharine L. Wade	Connecticut
Stephen C. Taylor	District of Columbia
David Altmaier	Florida
Gordon I. Ito	Hawaii
Jennifer Hammer	Illinois
Doug Ommen	Iowa
Ken Selzer	Kansas
James J. Donelon	Louisiana
Gary Anderson	Massachusetts
Patrick M. McPharlin	Michigan
Chlora Lindley-Myers	Missouri
Bruce R. Range	Nebraska -
Barbara D. Richardson	Nevada
John G. Franchini	New Mexico
Maria T. Vullo	New York
John D. Doak	Oklahoma
Jessica Altman	Pennsylvania
Elizabeth Kelleher Dwyer	Rhode Island
Todd E. Kiser	Utah
Mike Kreidler	Washington
Ted Nickel	Wisconsin

NAIC Support Staff: Jane Koenigsman

FINANCIAL CONDITION (E) COMMITTEE

(Continued)

Receivership Financial Analysis (E) Working Group

of the Receivership and Insolvency (E) Task Force

David Wilson, Chair	California
Toma Wilkerson	Florida
Kevin Baldwin	Illinois
Jim Armstrong	Iowa
Scott Fischer	New York
Laura Lyon Slaymaker	Pennsylvania
James Kennedy	Texas

NAIC Support Staff: Jane Koenigsman

Receivership Model Law (E) Working Group

of the Receivership and Insolvency (E) Task Force

James Kennedy, Chair	Texas
Doug Hartz, Vice Chair	Washington
Steve Uhrynowycz / Suzanne Tipton	Arkansas
John Battle / Jack Hom	California
Peg Brown	Colorado
Jon Arsenault	Connecticut
Toma Wilkerson	Florida
Kevin Baldwin	Illinois
Jim Armstrong / Kim Cross	Iowa
Christopher Joyce	Massachusetts
James Gerber	Michigan
Tamara Kopp	Missouri
Christine Neighbors/Matt Holman	Nebraska
Kristine Maurer/Brendan Peppard	New Jersey
Laura Slaymaker	Pennsylvania
Brett J. Barratt	Utah
Tom Glause	Wyoming

NAIC Support Staff: Jane Koenigsman

Receivership Technology and Administration (E) Working Group

of the Receivership and Insolvency (E) Task Force

Kevin Baldwin, Chair	Illinois
John Battle	California
Toma Wilkerson	Florida
TBD	Indiana
Arlene Knighten	Louisiana
Christopher Brennan	New Jersey
Ted Coopersmith	New York
James Kennedy	Texas

NAIC Support Staff: Bill Rivers/ Jane Koenigsman

FINANCIAL CONDITION (E) COMMITTEE

(Continued)

REINSURANCE (E) TASK FORCE

Maria T. Vullo, Chair	New York
Chlora Lindley-Myers, Co-Vice Chair	Missouri
Bruce R. Ramage, Co-Vice Chair	Nebraska
Jim L. Ridling	Alabama
Lori K. Wing-Heier	Alaska
Allen W. Kerr	Arkansas
Dave Jones	California
Marguerite Salazar	Colorado
Katharine L. Wade	Connecticut
Trinidad Navarro	Delaware
Stephen C. Taylor	District of Columbia
David Altmaier	Florida
Ralph T. Hudgens	Georgia
Jennifer Hammer	Illinois
Stephen W. Robertson	Indiana
Doug Ommen	Iowa
Ken Selzer	Kansas
James J. Donelon	Louisiana
Eric A. Cioppa	Maine
Gary Anderson	Massachusetts
Matthew Rosendale	Montana
Barbara D. Richardson	Nevada
Roger A. Sevigny	New Hampshire
Richard J. Badolato	New Jersey
Mike Causey	North Carolina
Jillian Froment	Ohio
John D. Doak	Oklahoma
Javier Rivera Rios	Puerto Rico
Elizabeth Kelleher Dwyer	Rhode Island
Raymond G. Farmer	South Carolina
Julie Mix McPeak	Tennessee
Kent Sullivan	Texas
Todd E. Kiser	Utah
Michael S. Pieciak	Vermont
Jacqueline K. Cunningham	Virginia
Ted Nickel	Wisconsin

NAIC Support Staff: Jake Stultz/Dan Schelp

FINANCIAL CONDITION (E) COMMITTEE

(Continued)

Reinsurance Financial Analysis (E) Working Group

of the Reinsurance (E) Task Force

John Rehagen, Chair	Missouri
Richard Ford	Alabama
Kurt Regner	Arizona
Emma Hirschhorn	California
Dave Lonchar	Delaware
Robert Ridenour	Florida
Mark Ossi	Georgia
James Matheson/Marc Allen	New York
Joe DiMemmo	Pennsylvania
Jeff Hunt	Texas
Doug Stolte	Virginia
Randy Milquet	Wisconsin

NAIC Support Staff: Andy Daleo

Reinsurance Investment Security (E) Subgroup

of the Reinsurance (E) Task Force

James Jakielo, Chair	Connecticut
Monica Macaluso/Jennifer Chambers	California
Rolf Kaumann	Colorado
Kevin Fry/Bruce Sartain	Illinois
Robert Wake	Maine
John Rehagen	Missouri
Kristine Maurer/David Wolf	New Jersey
Mark McLeod	New York

NAIC Support Staff: Julie Gann/Todd Sells/Charles Therriault/Robert Carcano

Qualified Jurisdiction (E) Working Group

of the Reinsurance (E) Task Force

Brett Barratt, Chair	Utah
Kathy Belfi	Connecticut
David Altmaier	Florida
Mark Ossi	Georgia
Tom Travis	Louisiana
Robert Wake	Maine
John Rehagen	Missouri
Richard Schlesinger	New Jersey
Brian Glaab	New York
Kimberly Rankin	Pennsylvania
Jeff Hunt	Texas

NAIC Support Staff: Dan Schelp/Matt Todd

FINANCIAL CONDITION (E) COMMITTEE

(Continued)

RISK RETENTION GROUP (E) TASK FORCE

Michael S. Pieciak, Chair	Vermont
Dave Jones, Vice Chair	California
Trinidad Navarro	Delaware
Stephen C. Taylor	District of Columbia
Gordon I. Ito	Hawaii
Jennifer Hammer	Illinois
James J. Donelon	Louisiana
Mike Rothman	Minnesota
Barbara D. Richardson	Nevada
Mike Causey	North Carolina
John D. Doak	Oklahoma
Raymond G. Farmer	South Carolina
Julie Mix McPeak	Tennessee

NAIC Support Staff: Becky Meyer/Sara Franson

VALUATION OF SECURITIES (E) TASK FORCE

James J. Donelon, Chair	Louisiana
Jennifer Hammer, Vice Chair	Illinois
Lori K. Wing-Heier	Alaska
Dave Jones	California
Katharine L. Wade	Connecticut
Trinidad Navarro	Delaware
Stephen C. Taylor	District of Columbia
David Altmaier	Florida
Gordon I. Ito	Hawaii
Dean L. Cameron	Idaho
Doug Ommen	Iowa
Ken Selzer	Kansas
Al Redmer Jr.	Maryland
Bruce R. Range	Nebraska
Barbara D. Richardson	Nevada
Richard J. Badolato	New Jersey
Maria T. Vullo	New York
John D. Doak	Oklahoma
Jessica Altman	Pennsylvania
Kent Sullivan	Texas
Todd E. Kiser	Utah
Jacqueline K. Cunningham	Virginia
Mike Kreidler	Washington
Ted Nickel	Wisconsin

NAIC Support Staff: Charles A. Therriault/Robert Carcano

**FINANCIAL REGULATION STANDARDS AND
ACCREDITATION (F) COMMITTEE**

Todd E Kiser, Chair	Utah
Elizabeth Kelleher Dwyer, Vice Chair	Rhode Island
Jim L. Ridling	Alabama
Allen W. Kerr	Arkansas
Gordon I. Ito	Hawaii
Eric A. Cioppa	Maine
Patrick M. McPharlin	Michigan
Chlora Lindley-Myers	Missouri
Bruce R. Range	Nebraska
Richard J. Badolato	New Jersey
John G. Franchini	New Mexico
Javier Rivera Rios	Puerto Rico
Kent Sullivan	Texas
Jacqueline K. Cunningham	Virginia
Tom Glause	Wyoming

NAIC Support Staff: Julie L. Garber/Becky Meyer

INTERNATIONAL INSURANCE RELATIONS (G) COMMITTEE

Katharine L. Wade, Chair	Connecticut
Gordon I. Ito, Vice Chair	Hawaii
Stephen C. Taylor	District of Columbia
David Altmaier	Florida
Doug Ommen	Iowa
James J. Donelon	Louisiana
Gary Anderson	Massachusetts
Patrick M. McPharlin	Michigan
Bruce R. Ramage	Nebraska
Richard J. Badolato	New Jersey
Maria T. Vullo	New York
John D. Doak	Oklahoma
Jessica Altman	Pennsylvania
Raymond G. Farmer	South Carolina
Kent Sullivan	Texas

NAIC Support Staff: Ethan Sonnichsen/Ryan Workman

ComFrame Development and Analysis (G) Working Group

David Altmaier, Chair	Florida
Katharine L. Wade	Connecticut
Kevin Fry	Illinois
Doug Ommen	Iowa
John Turchi	Massachusetts
Chlora Lindley-Myers	Missouri
Justin C. Schrader	Nebraska
Peter L. Hartt	New Jersey
Martha Lees	New York
Raymond G. Farmer	South Carolina
Julie Mix McPeak	Tennessee
Doug Slape	Texas
Doug Stolte	Virginia

NAIC Support Staff: Ryan Workman/Ramon Calderon

International Regulatory Cooperation (G) Working Group

Tom Travis, Chair	Louisiana
Gordon I. Ito	Hawaii
Emma Hirschhorn	California
Philip Barlow	District of Columbia
Justin Durrance	Georgia
Tamara W. Kopp	Missouri
Alan Seeley	New Mexico
Martha Lees	New York
Buddy Combs	Oklahoma
Michael Nored	Texas

NAIC Support Staff: Ekrem Sarper

NAIC/CONSUMER LIAISON COMMITTEE

Marguerite Salazar, Chair	Colorado
Stephen C. Taylor, Vice Chair	District of Columbia
Jim L. Ridling	Alabama
Lori K. Wing-Heier	Alaska
Dave Jones	California
Katharine L. Wade	Connecticut
Trinidad Navarro	Delaware
David Altmaier	Florida
Dean L. Cameron	Idaho
Stephen W. Robertson	Indiana
Ken Selzer	Kansas
James J. Donelon	Louisiana
Al Redmer Jr.	Maryland
Patrick M. McPharlin	Michigan
Mike Rothman	Minnesota
Mike Chaney	Mississippi
Chlora Lindley-Myers	Missouri
Bruce R. Ramge	Nebraska
Barbara D. Richardson	Nevada
John G. Franchini	New Mexico
Mike Causey	North Carolina
Jon Godfread	North Dakota
Jillian Froment	Ohio
John D. Doak	Oklahoma
Jean Straight	Oregon
Kent Sullivan	Texas
Todd E. Kiser	Utah
Jacqueline K. Cunningham	Virginia
Mike Kreidler	Washington
Allan L. McVey	West Virginia
Ted Nickel	Wisconsin

NAIC Support Staff: Lois E. Alexander

NAIC/CONSUMER LIAISON COMMITTEE

(continued)

NAIC/American Indian and Alaska Native Liaison Committee

Lori K. Wing-Heier, Chair	Alaska
Matthew Rosendale, Vice Chair	Montana
Marguerite Salazar	Colorado
Dean L. Cameron	Idaho
Mike Rothman	Minnesota
John G. Franchini	New Mexico
Mark O. Rabauliman	Northern Mariana Islands
John D. Doak	Oklahoma
Jean Straight	Oregon
Larry Deiter	South Dakota
Mike Kreidler	Washington
Ted Nickel	Wisconsin

NAIC Support Staff: Lois E. Alexander

NAIC/INDUSTRY LIAISON COMMITTEE

Julie Mix McPeak, Chair	Tennessee
Eric A. Cioppa, Vice Chair	Maine
Jim L. Ridling	Alabama
Lori K. Wing-Heier	Alaska
Allen W. Kerr	Arkansas
Dave Jones	California
Katharine L. Wade	Connecticut
Trinidad Navarro	Delaware
Stephen C. Taylor	District of Columbia
Dean L. Cameron	Idaho
Jennifer Hammer	Illinois
Ken Selzer	Kansas
Nancy G. Atkins	Kentucky
Matthew Rosendale	Montana
Bruce R. Ramge	Nebraska
John G. Franchini	New Mexico
Jon Godfread	North Dakota
John D. Doak	Oklahoma
Larry Deiter	South Dakota
Todd E. Kiser	Utah
Michael S. Pieciak	Vermont
Osbert E. Potter	Virgin Islands
Jacqueline K. Cunningham	Virginia
Allan L. McVey	West Virginia

NAIC Support Staff: Mark Sagat/Chara Bradstreet

NAIC/STATE GOVERNMENT LIAISON COMMITTEE

Ted Nickel, Chair	Wisconsin
Julie Mix McPeak, Vice Chair	Tennessee
Jim L. Ridling	Alabama
Lori K. Wing-Heier	Alaska
Allen W. Kerr	Arkansas
Marguerite Salazar	Colorado
Trinidad Navarro	Delaware
Dean L. Cameron	Idaho
Ken Selzer	Kansas
Al Redmer Jr.	Maryland
Mike Rothman	Minnesota
Roger A. Sevigny	New Hampshire
John G. Franchini	New Mexico
Jon Godfread	North Dakota
Jillian Froment	Ohio
John D. Doak	Oklahoma
Elizabeth Kelleher Dwyer	Rhode Island
Larry Deiter	South Dakota
Kent Sullivan	Texas
Mike Kreidler	Washington

NAIC Support Staff: Mark Sagat/Chara Bradstreet

2017 MEMBERS BY ZONES

Northeast Zone

Al Redmer Jr., Chair
Katharine L. Wade, Vice Chair
Roger A. Sevigny, Secretary

Maryland
Connecticut
New Hampshire

Trinidad Navarro
Stephen C. Taylor
Eric A. Cioppa
Gary Anderson
Richard J. Badolato
Maria T. Vullo
Jessica Altman
Elizabeth Kelleher Dwyer
Michael S. Pieciak

Delaware
District of Columbia
Maine
Massachusetts
New Jersey
New York
Pennsylvania
Rhode Island
Vermont

Southeast Zone

Jim L. Ridling, Chair
Mike Chaney, Vice Chair
Jacqueline K. Cunningham, Secretary

Alabama
Mississippi
Virginia

Allen W. Kerr
David Altmaier
Ralph T. Hudgens
Nancy G. Atkins
James J. Donelon
Mike Causey
Javier Rivera Rios
Raymond G. Farmer
Julie Mix McPeak
Osbert E. Potter
Allan L. McVey

Arkansas
Florida
Georgia
Kentucky
Louisiana
North Carolina
Puerto Rico
South Carolina
Tennessee
Virgin Islands
West Virginia

Midwest Zone

Ken Selzer, Chair
John D. Doak, Vice Chair
Stephen W. Robertson, Secretary

Kansas
Oklahoma
Indiana

Jennifer Hammer
Doug Ommen
Patrick M. McPharlin
Mike Rothman
Chlora Lindley-Myers
Bruce R. Ramge
Jon Godfread
Jillian Froment
Larry Deiter
Ted Nickel

Illinois
Iowa
Michigan
Minnesota
Missouri
Nebraska
North Dakota
Ohio
South Dakota
Wisconsin

Western Zone

Dave Jones, Chair
Todd E. Kiser, Vice Chair
Dean L. Cameron, Secretary

California
Utah
Idaho

Lori K. Wing-Heier
Peter Fuimaono
Leslie R. Hess
Marguerite Salazar
Artemio B. Ilagan
Gordon I. Ito
Matthew Rosendale
Mark O. Rabauliman
Barbara D. Richardson
John G. Franchini
Jean Straight
Kent Sullivan
Mike Kreidler
Tom Glause

Alaska
American Samoa
Arizona
Colorado
Guam
Hawaii
Montana
N. Mariana Islands
Nevada
New Mexico
Oregon
Texas
Washington
Wyoming